

20.05.20 Update – AMA Covid-19 social distancing procedures

To follow social distancing guidelines, virtual design team meetings are the preferred option. AMA employees shall not attend meetings within confined spaces, including site huts and meeting rooms. Staff attendance may be permitted to informal outdoor meetings and walk-around meetings, subject to risk assessment and director approval. We are carrying out site visits and surveys, subject to risk assessment and agreeing the method prior to attendance. Our office is now open for staggered working, but AMA employees are primarily working remotely.

29.04.20 Operating Theatres Refurbishment at Guildford Hospital

Refurbishment of existing operating theatres 6-10 at Guildford Hospital is successfully completed, whilst working adjacent to live developments. AMA provided M&E consultancy services, and designed a temporary extract system to prevent adhesive emissions reaching adjacent live theatre environments.



03.04.20 Update – AMA business during shutdown

AMA team are continuing to work remotely through the shutdown. We use Microsoft Teams to carry on with design work and for design and project meetings. So far it's working well. We have a virtual assistant facility at our office, with co-ordinated incoming calls.

31.03.20 Guildford Hospital Maternity SCBU handed over

Phase 1 of Guildford Hospital Maternity department project completed and handed over. The project included delivery of Special Care Baby Unit (SCBU). Phases 2 & 3 continue on site with construction of new operating theatre.



25.03.20 **Business during Covid-19 outbreak**

In response to the potential spread of the Covid-19 virus, AMA are following Public Health England guidelines and all our staff is working remotely. We are continuing to operate and provide services as best we can. We are contactable on mobile phones and emails, or you can contact info@amaconsult.co.uk (<mailto:info@amaconsult.co.uk>).

05.03.20 **Guildford Hospital Generator**

AMA appointed by Royal Surrey NHS Foundation Trust to design and manage the installation of a replacement 1500kva backup generator for Guildford Hospital. The works included an installation of temporary generator, strip out of the existing generator, modifications to existing LV switch panels and new automatic controls; all within limited space. New generators were tested and operational last week.



20.02.20 **Award for Recycling**

Our annual recycling award states we have recycled 640kg of paper and cardboard, saving eight trees and 900kg of CO₂.



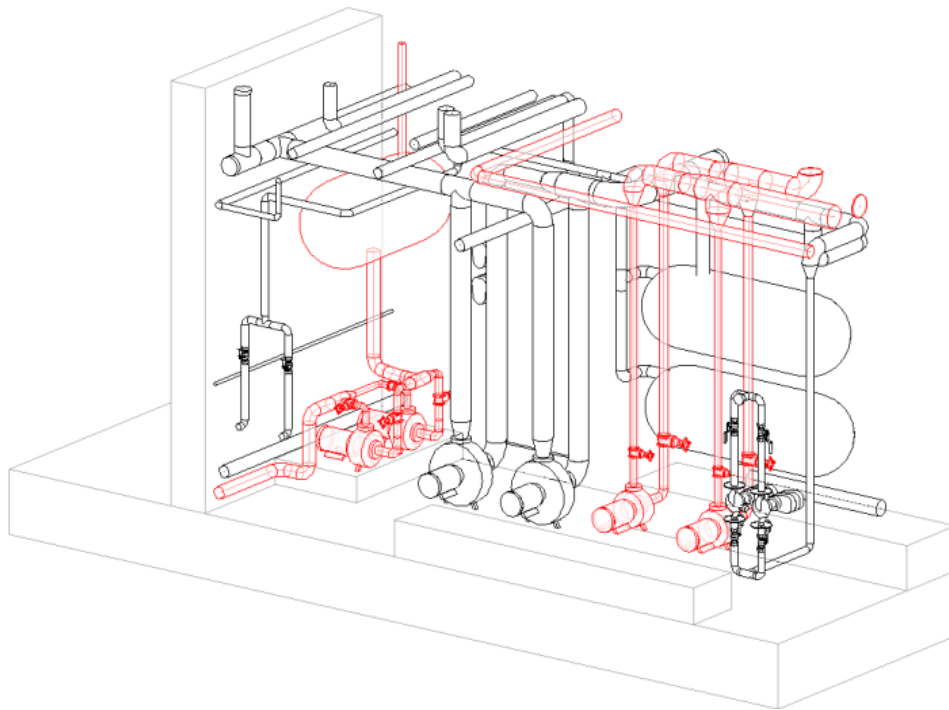
13.02.20 Central chiller plant replacement

AMA are appointed by East Sussex Healthcare NHS Trust to provide M&E design services associated with the phased replacement of the existing central chiller plant at Conquest Hospital, Hastings. The chiller plant, which was installed around 1990, has had a long service life. We have carried out surveys and used laser scanning, so that we can create a Revit model of the existing plant.



22.01.20 Southlands Hospital 3D scan

We are currently designing strip out of existing M&E redundant services in an existing plantroom and design of new mechanical services control panel. This is our first 'scanning' project. We hired a Leica RTC360 laser scanner to scan the existing plantroom, and create a 3D point cloud. From the point cloud we have created a Revit drawing of the plantroom to show required services strip out and modifications.

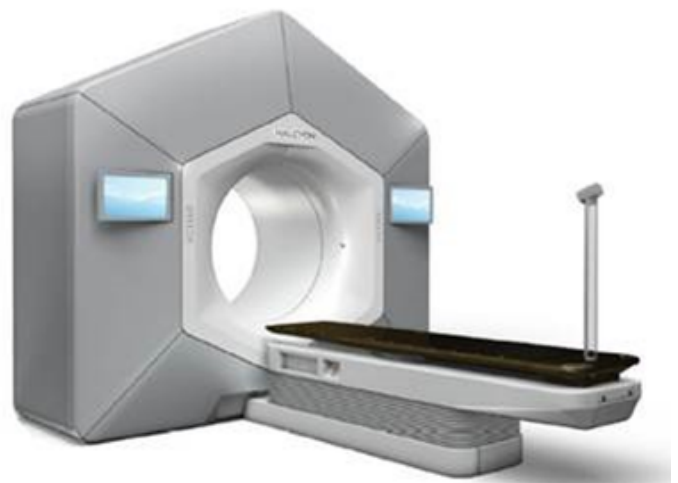


13.01.20 **RSCH Guildford Cardiology and MRI**

AMA appointed Royal Surrey NHS Foundation Trust to design new mechanical and electrical services for new Cardiology and MRI service to be located in the existing Haste Building. We are currently progressing initial design proposals.

10.01.20 **RSCH Guildford LINAC**

AMA appointed by Royal Surrey NHS Foundation Trust to design new mechanical and electrical services for new radiotherapy system, including dedicated chilled water system for cooling the radiotherapy machine and illuminated feature ceiling to improve patient wellbeing.



19.12.19 **Merry Christmas!**

Merry Christmas and happy New Year from all at AMA, we look forward to working with you through 2020!



11.12.19 Conquest Hospital digital twin

AMA are currently creating a digital twin replica of the ESNT Conquest Hospital in Hastings. The digital twin is an IES dynamic energy model of the whole hospital building. The twin does not yet link to real time energy data but it can be used to test energy strategies and identify areas where the operation of the building can be improved.

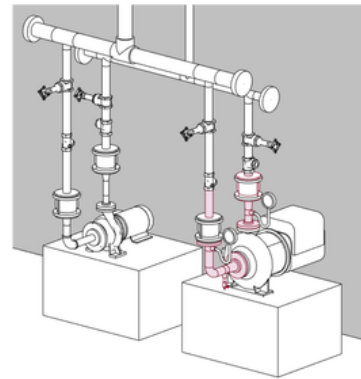
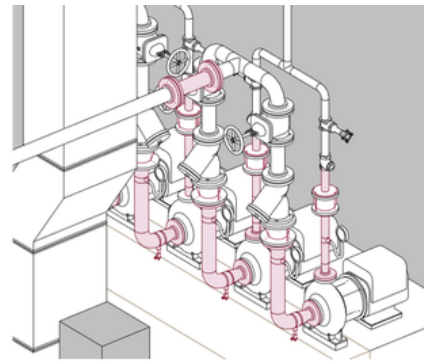
06.12.19 Well done Sonny!

Sonny Daluz has completed the first term at East Surrey College where he is studying for a Building Services Engineering NVQ. Sonny joined AMA in September as an apprentice engineer and attends college one day a week. Well done Sonny!



02.12.19 ESNT Conquest Hospital heating pump replacement

We recently completed the design for the replacement of heating pumps in the Conquest Hospital's five plantrooms. The AMA Tender design package included Revit 3D visualisations and renders.



02.12.19 St Richard's new AHU Planning Application

The new air handling unit (AHU) works are submitted to Planning. The new AHUs will be located on the West Block roof and will serve the maternity and ophthalmology departments.

21.11.19 Royal Sussex County Hospital sterilisers project out to Tender

The M&E infrastructure project for pathology sterilisers at Royal Sussex County Hospital for Brighton and Sussex Universities NHS Trust is now out to Tender.

18.11.19 Electrical Engineer Vacancy

AMA are a team of qualified engineers and technologists specialising in mechanical, electrical, public health (MEP) engineering services and building physics of the built environment. Our portfolio of work includes clients from healthcare, education and commercial sectors.

Job description

Reporting directly to the Electrical Director, your role will be to carry out electrical design, including lighting, LV supply, small power distribution, earthing, fire and voice alarm systems, telecommunication services, low current and extra low voltage services, automatic controls, BMS as well as other related electrical utility systems and to:

- Liaise with client and design team members
- Manage and ensure compliance with design and QA procedures
- Mark-up drawings to send to CAD department for issue
- Undertake surveys, preparation of reports, drawings and specifications
- Provide technical advice / assistance to queries raised by the project teams, and assist with the re-engineering of pre-designed contracts
- Monitoring installations on site to ensure that installation satisfies design intent, and / or to brief the departmental technical services section in the undertaking of their responsibilities

Qualifications

HNC/HND in Building Services Engineering as an absolute minimum. 5+ years' experience in the design of electrical building services. Competent use of Amtech, Dialux, Autocad and Revit. Highly organised with a logical and disciplined approach to deadlines. Excellent written skills for specification/ report writing.

Benefits

We offer a competitive salary, company pensions scheme and an excellent working environment with opportunities for training and career development. Successful candidates will be asked to complete a Baseline Standard Pre-Employment check and will be required to undergo various checks including Identity, Right to Work; Employment/Education History and Criminal Record. AMA is an Equal Opportunity Employer committed to the safety and wellbeing of all.

Please email your cv to Vanessa@amaconsult.co.uk (<mailto:Vanessa@amaconsult.co.uk>).

24.10.19 Duncan House is completed

Duncan House in London is completed and students have moved in. AMA designed the mechanical services, including heating and domestic hot and cold water services for this new 33 floor student accommodation block. The heating plant design, included central gas fired CHP and boilers.



23.09.19 Feasibility Study for the Phyllis Tuckwell Hospice

AMA have completed a feasibility study on the replacement of the existing heating system at the Phyllis Tuckwell Hospice. We were employed by BAQUS Construction & Property Consultancy, who carried out a wider feasibility study on the building.



04.09.19 A day at Goodwood Races

AMA enjoy a day at Goodwood for horse racing. We were treated to a behind the scenes tour by jockey David Crosse, including a trip down to the start line and some top tips on the running horses.

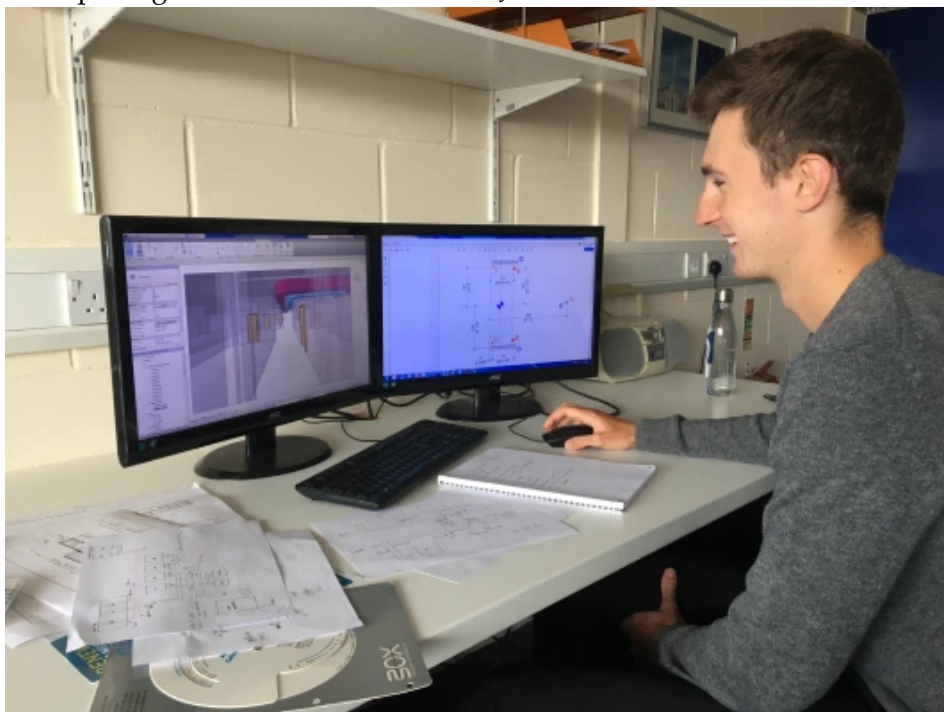


02.09.19 **Welcome Sonny!**

AMA welcome Sonny Daluz. Sonny did a work experience week at AMA last summer and we are now happy to welcome him back as a Building Services Engineering Apprentice. Sonny will be studying at East Surrey College for his four year National Vocational Qualification (NVQ) work based way of learning.

16.08.19 **Josh's work experince**

Josh Couchman, a third year Mechanical Engineering student at University of Bristol has been at AMA for a work experince week. Josh has assited with mechanical design calculations, schematics and learnt the basics of software packages Revit and IES. We wish Josh all the best with his future studies.



05.08.19 **Welcome Jenny!**

AMA welcome Jenny McGuill, who fills the role of a Chartered Senior Mechanical Design Engineer who also has knowledge of Electrical Engineering. Jenny has come to us from another multi disciplinary practice where she gained several years of experience. Prior to coming to Brighton, Jenny lived in Ireland where she obtained her Engineering Degree.



11.07.19 Guildford A&E complete

Phase 3 of £6.9million refurbishment of Guildford Hospital's Accident and Emergency department complete. AMA are employed by Royal Surrey County Hospital NHS Foundation Trust to provide full mechanical and electrical consulting engineering duties.



26.06.19 Princess Royal Hospital

AMA appointed by Brighton and Sussex Univeristy Hospitals NHS TRust to provide mechanical and electrical consulting services for updating the existing imaging department at Princess Royal Hospital, Haywards Heath.

27.05.19 Generator at Guildford Hospital

AMA employed by Royal Surrey County Hospital NHS Foundation Trust to design and manage the installation of a new 1500kVA diesel generator at Guildford Hospital. The project is due out to tender in mid July.



17.05.19 Vacancies for mechanical and electrical engineers

Mechanical Building Services Design Engineer

Reporting directly to the Managing Director; your role will be to develop, manage and lead mechanical services designs from inception to completion, including heating, ventilation, air conditioning and domestic hot and cold water services. Responsibilities include:

- Liaise with client and design team members
- Develop project brief, and outline budget costings for projects
- Manage and ensure compliance with design and QA procedures
- Mark-up drawings to send to CAD department for issue
- Undertake surveys, preparation of reports, drawings and specifications
- Provide technical advice and assistance to queries raised by the project teams, and assist with the re-engineering of pre-designed contracts
- Monitor installations on site to ensure that installation satisfies design intent, and brief the departmental technical services in the undertaking of their responsibilities
- Mentor graduate engineers/ apprentices

Required qualifications and skills:

- HNC/ HND in Building Services Engineering is a minimum
- 10+ Years' experience in the design of mechanical building services
- Competent use of Hevacomp, IES, Autocad and Revit
- Highly organised with a logical and disciplined approach to deadlines
- Excellent written skills for specification/ report writing
- Good communication, presentation and client facing skills
- Customer focused, ability to maintain and build new working relationships with clients

Electrical Building Services Design Engineer

Reporting directly to the Senior Associate Electrical Services Engineer, your role will be to carry out electrical design, including lighting, LV supply, small power distribution, earthing, fire and voice alarm systems, telecommunication services, low current and extra low voltage services, automatic controls, BMS as well as other related electrical utility systems and to:

- Liaise with client and design team members
- Manage and ensure compliance with design and QA procedures
- Mark-up drawings to send to CAD department for issue
- Undertake surveys, preparation of reports, drawings and specifications
- Provide technical advice/ assistance to queries raised by the project teams, and assist with the re-engineering of pre-designed contracts
- Monitoring installations on site to ensure that installation satisfies design intent, and/ or to brief the departmental technical services in the undertaking of their responsibilities

Required qualifications and skills:

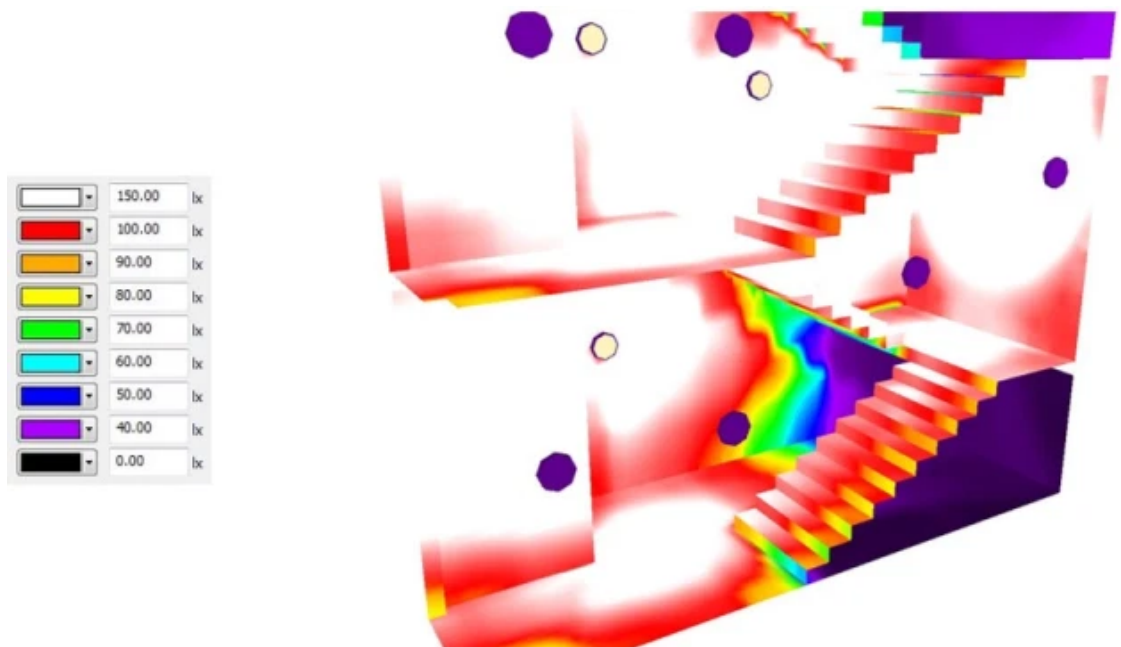
- HNC/ HND in Building Services Engineering as an absolute minimum
- 5+ Years' experience in the design of electrical building services
- Competent use of Amtech, Dialux, Autocad and Revit
- Highly organised with a logical and disciplined approach to deadlines
- Excellent written skills for specification/ report writing

We offer a competitive salary and company pensions scheme and an excellent working environment with opportunities for training and career development. Successful candidates will be asked to complete a Baseline Standard Pre-Employment check and will be required to undergo various checks including Identity, Right to Work; Employment/ Education History and Criminal Record. AMA is an Equal Opportunity Employer committed to the safety and wellbeing of all.

Please email your cv to Vanessa@amaconsult.co.uk

07.03.19 Dialux calculation images

Dialux lighting calculations carried out to ascertain correct lighting levels within stairwells of multi storey residential blocks, Taberner House in Croydon.



28.02.19 Award for recycling 2019

Our annual recycling statement notifies that in the past year we recycled 350kg of paper and cardboard, this is saving the equivalent of four trees and 490kg of CO2.



20.12.18 Merry Christmas from all at AMA!

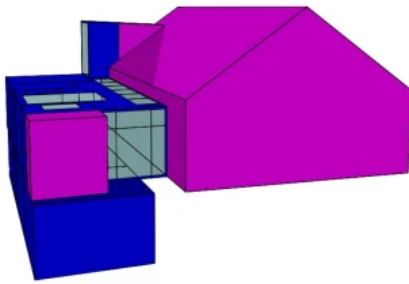
Season's Greetings from all at AMA! We have had a very busy year of many interesting projects and look forward to working with new and existing clients in 2019. To kick off the year, we will be extending our offices to accommodate our growing team. Our offices will close at 12.00 on Monday 24th December and re-open Wednesday 2nd January.



(<https://gph.is/2rLYR3B>).

16.11.18 Seaside Studios extension block

We are working on the M&E services design for the extension block at Seaside Studios in Portslade. The new block has ground and basement floors and houses the music production rooms. The existing building, a former Salvation Army Citadel built in 1910, houses the live recording rooms. We have developed a 3D IES model (image on left) to establish heating and cooling loads, image on the right is the proposed North elevation by Liam Russell Architects.



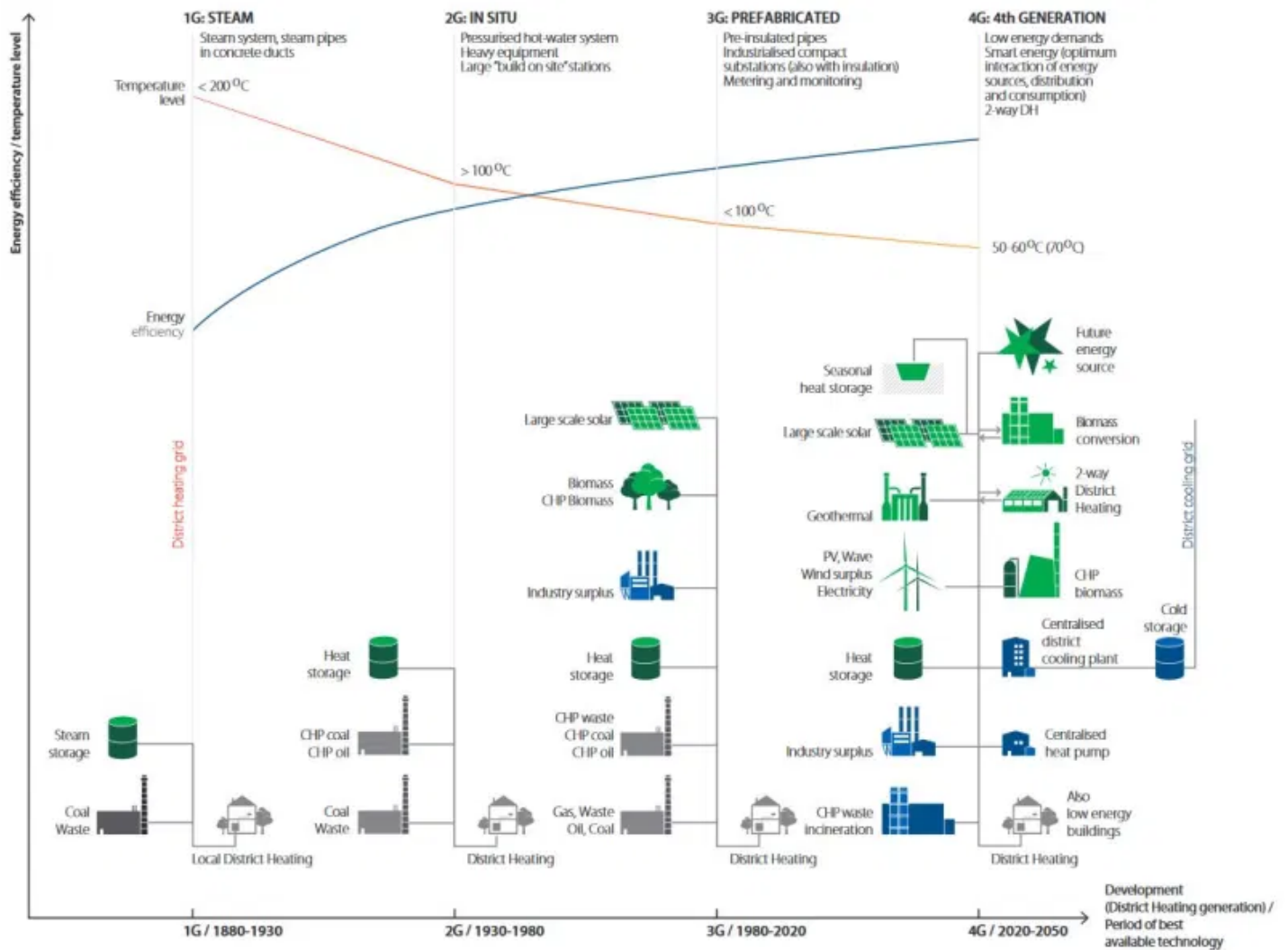
02.11.18 Off the Line Vineyard is up and running with a bumper harvest

AMA are pleased to hear that Off the Line Vineyard (<http://www.offthelinevineyard.com>) have had their first year of live operation and a bumper harvest. The grapes were processed on site and the wines will be released in early May 2019. We worked on the project design in 2016, including liaising with UKPN for the installation of 3-phase LV supply. Images by BBM Sustainable Design (<https://bbm-architects.co.uk/>)



31.10.18 4th generation of heat networks

UK heat networks (district heating systems) are evolving from 3G to 4G. Whilst 3G heat networks produce energy efficiently from an energy centre, they are tied into their original heat source (e.g. CHP engine backed by boilers). The 4G heat networks integrate electricity, thermal and gas grids and work on an 'open source' approach offering flexibility for buildings to use diverse sources (i.e. CHP, boilers, heat pumps, solar thermal, waste heat etc.). 4G also allows buildings to contribute waste heat back into the grid.



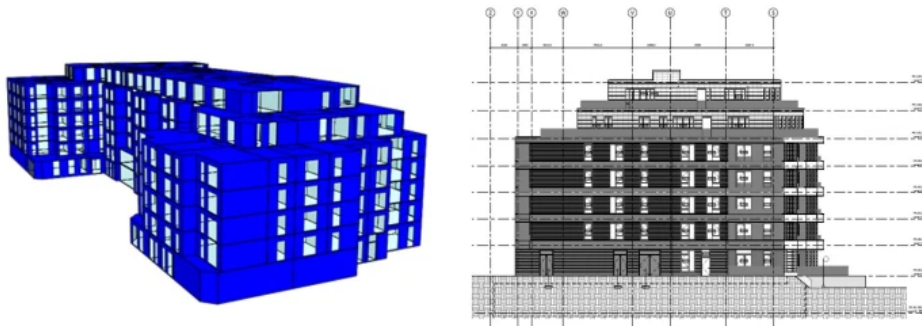
10.10.18 Another site survey

Our site surveys take us to every corner of a building, including the cleaner's cupboard where Henry Hoovers were holding a meeting.



08.10.18 'Later life' residential development for ProMEP

AMA are working for ProMEP on the Landsby Stanmore residential block in the London Borough of Harrow. The building is a 'later life' development for the over 65's, featuring 101 easily adaptable apartments and communal on site facilities designed to keep residents living as independently as possible. An adjacent building of 70 apartments also forms part of the development, both buildings are served by a central CHP.



05.10.18 Southlands Hospital medical records contract issue

AMA are working for Paine Manwaring on the Southlands Hospital medical records project. The Trust are relocating their Medical Records and admin staff within the existing buildings on site, AMA are employed to carry out M&E design to bring the new location to user requirement. We have now completed the contract issue drawings and documents, works are due to start on site.

24.09.18 BB101 2018 update

The guidelines on ventilation, thermal comfort and indoor air quality in schools has been updated. The document describes the factors that affect the indoor environment of schools, setting out the regulatory framework for ventilation in schools and gives recommended performance levels for compliance with UK regulations. AMA carry out BB101 assessments for schools. Image by [ESFA](https://www.gov.uk/government/publications/building-bulletin-101-ventilation-for-school-buildings)
(<https://www.gov.uk/government/publications/building-bulletin-101-ventilation-for-school-buildings>)



BB101 Hybrid system 2018

05.09.18 Glorious Goodwood

AMA go to Goodwood for a day out at the 'world's most beautiful racecourse'. We were treated to a meal with a panoramic view looking directly out onto the race course. The venue host told us about the history of the grounds and gave tips on what to look out for, we even spotted one of the Queen's horses!



09.08.18 RNOH Stanmore Black Building Test

A full black building test was carried out at Royal National Orthopaedic Hospital Stanmore as a part of the final testing and commissioning process prior to handover to the client. The main purpose of the black building test was to prove that the LV/HV infrastructure comprising of two back-up generators and two LV switch panels would in every connotation to insure full resilience to the system in case of a power outage.



09.08.18 Taberner House and Queen's Gardens

AMA are working for ProMEP on the new Taberner House and Queen's Gardens residential development in Croydon. The development consists of four tower blocks, the highest with 35 storeys, in a prominent central Croydon location; the site has been vacant for a number of years after the demolition of the old council offices. AMA are providing M&E design duties, including the sizing of a new central CHP plant.



01.08.18 Welcome Phil!

Phil Rowbottom is joining AMA as an engineering trainee. Phil comes with a strong digital technology background. Welcome Phil!

16.07.18 Sonny's work experience

Sonny Daluz, year 10 student from Dorothy Stringer High School, is doing a work experience week at AMA. Sonny has always been interested in engineering and will be learning the basics of 2D drafting and 3D modelling with the use of AutoCAD and IES VE packages.



13.07.18 Ansty Ward starting on site

Ansty Ward is the new urology department at Princess Royal Hospital in Haywards Heath. AMA is employed by Kier for M&E design duties. We originally worked on the design two years ago when the project was put on hold, the Trust is now ready to progress with the works and AMA are issuing Construction documents for imminent start on site.

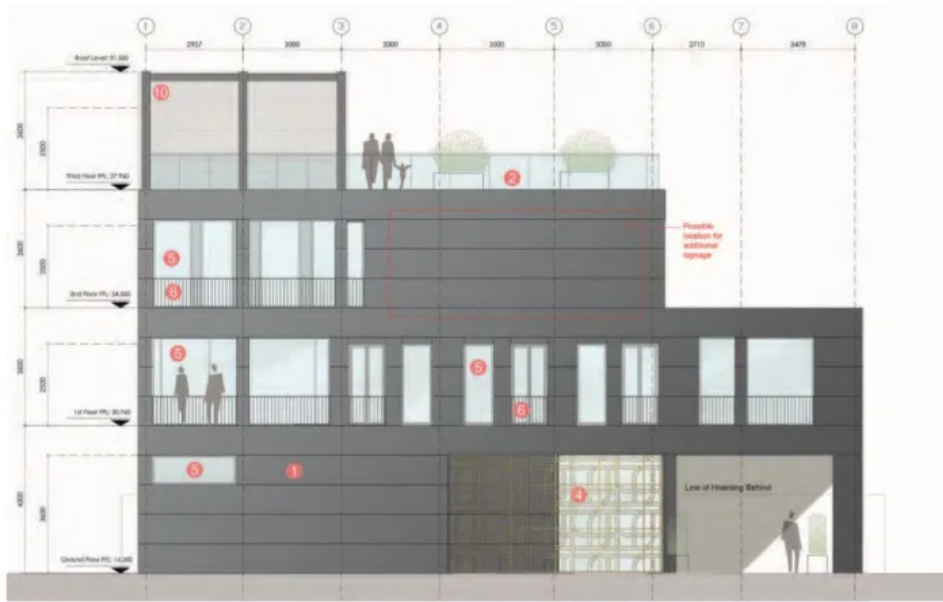
12.07.18 Student accommodation projects for ProMEP

AMA are working on the M&E design for three new student accommodation projects for ProMEP. These include Forest Road in Walthamstow, Holdenhurst Road in Bournemouth (image below) and Oldway Centre in Swansea.



06.07.18 Mount Pleasant marketing suite for Octink

AMA are employed by Octink for M&E design duties for a new prestigious Postmark Marketing Suite at Mount Pleasant in Clerkenwell. The marketing suite is for a high end housing development in the heart of London, on an old Royal Mail sorting office site (Image by Darling Associates Architects).



05.07.18 Windlesham Sports Centre awarded highly commended by Sussex Heritage Trust Awards

Congratulations to the school and the project team on the Sussex Heritage Trust highly commended award. The scheme includes a 25m six lane swimming pool and a four court sports hall with changing rooms, shower facilities and spectator seating. AMA were employed by Paine Manwaring to carry out Part L compliance assessments, develop a BIM model to co-ordinate the MEP services and for commissioning management. Image by Paine Manwaring



03.07.18 RSCH Guildford Hospital A&E started on site

Phase II of the RSCH Guildford Hospital A&E Reconfiguration has started on site. AMA are also working on the feasibility for new operating theatres and pathology laboratories at the hospital.

02.07.18 Welcome Jonny!

AMA welcome Jonathan Matson as a trainee mechanical services design engineer. Jonny has a degree in Mechanical Engineering and previously worked for a site based contractor as a commissioning manager. Welcome Jonny!



25.05.18 Seaside Studios

AMA appointed to design and oversee the electrical installation to the new sound studio development by Seaside Studios in Portslade, Brighton. A crucial part of the design is to minimise interference of power waves to data signal to retain clean recording sound.



15.05.18 University of Sussex student accommodation

AMA appointed by Balfour Beatty to carry out testing and commissioning of MEP services at the new student accommodation on the University of Sussex Falmer Campus.

10.05.18 Brighton and Sussex University Hospitals, Thomas Kemp Tower refurbishment

We are working on the refurbishment of the Thomas Kemp Tower at Brighton General Hospital. The refurbishment is phased to ensure uninterrupted operation of the ante and post natal services. Works include Level 11 refurbishment to HTM & HBN compliant ward and Level 12 Triage area.

13.04.18 RNOH Stanmore

Testing and commissioning of MEP services has commenced at Royal National Orthopaedic Hospital, RNOH Stanmore.



06.04.18 Congratulations to Manuel!

Congratulations to Manuel for gaining Chartered Institution of Building Services Engineers (CIBSE) membership and Chartered Engineer status.

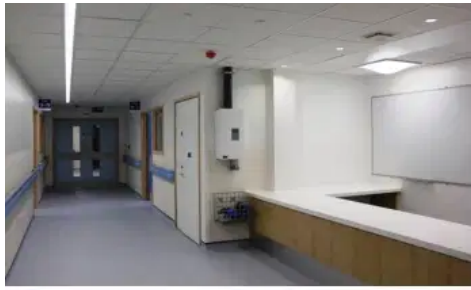
20.03.18 Award for recycling 2018

Our annual recycling statement notifies that in the past year we recycled 330kg of paper and cardboard, this is saving the equivalent of four trees and 470kg of CO₂.



16.03.18 Worthing Hospital East Wing Reconfiguration complete

We worked for KIER on this £2 million Worthing Hospital ward refurbishment, which has been completed on time and within project all adjacent live environments and connecting to existing engineering services infrastructure.



13.02.18 Worthing Hospital East Wing Reconfiguration

The £2 million Worthing Hospital East Wing Reconfiguration is now nearing completion. AMA are working for Kier, providing M&E duties associated with the new ward configuration.

06.02.18 Worthing Hospital Calorifier replacement projects

AMA are currently designing and providing contract administration for replacement of existing domestic hot water calorifiers with new plate heat exchangers and buffer vessels. In the photo on the left we can see some of the existing domestic hot water storage calorifiers serving the hospital East Wing, which have medium temperature hot water tube bundles (installed 20 to 40 years ago), and the photo on the right shows a modern plate heat exchanger with equivalent heat output.



17.01.17 Windlesham House School Commissioning Management

AMA completed commissioning management for M&E Services at the Windlesham House School pool and sports hall. This included witnessing all systems in accordance with the regulations, keeping track of all pre-commissioning and commissioning of services activities and producing a report for Paine Manwaring/ Kiers.

29.01.17 Electrical design engineer apprentice vacancy

We are looking to recruit an electrical design engineer apprentice to train and assist us with the following duties;

- Lighting design
- AutoCAD drafting
- Contacting and liaising with manufacturers
- Site surveys and meetings

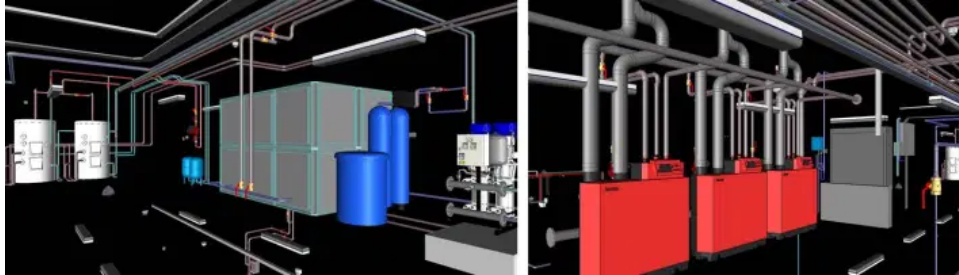
To apply please email Vanessa@amaconsult.co.uk

22.12.17 Season's Greetings from all at AMA

Merry Christmas and Happy New Year from all at AMA; we look forward to working with you on new and exciting projects in 2018.

20.10.17 Windlesham House School MEP BIM model

AMA worked for Paine Manwaring producing services co-ordination and clash detection for MEP services using Revit. We also produced working drawings and the record BIM model for the client. Images below show BIM model snaps of the plantroom.



20.10.17 AMA's new collaboration with VM&TS Madrid

AMA has provided MEP Due Diligence on a group of Care Homes in Spain for Venture Management and Technical Services (VM&TS), a Spanish based company providing Project and Design Management for JLL.



06.10.17 Latest AMA appointment for new student accommodation

We are pleased to announce our new job for Kaplan providing M&E monitoring for the construction of 450 bed student accommodation in new Circus Street area regeneration in Brighton. The former municipal fruit and vegetable market site is being developed as a mixed use scheme and 'innovation quarter'. Image from circusstreetbrighton.com (<http://circusstreetbrighton.com/>).

CIRCUS STREET

BRIGHTON'S NEW SOCIAL, CULTURAL AND ECONOMIC
QUARTER. REGENERATING THE CIRCUS STREET AREA.



04.09.17 Royal Sussex County Hospital Urgent Care Centre completed

Careful planning required for our M&E design on the refurbishment of this essential care centre open 24/7.



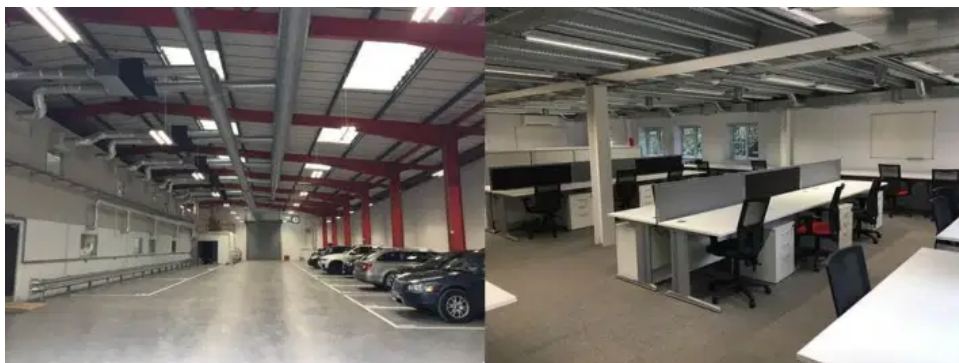
24.08.17 **Congratulations to Hanna**

Congratulations to Hanna, our Building Physics expert on the birth of her gorgeous baby daughter, Viola Mae.



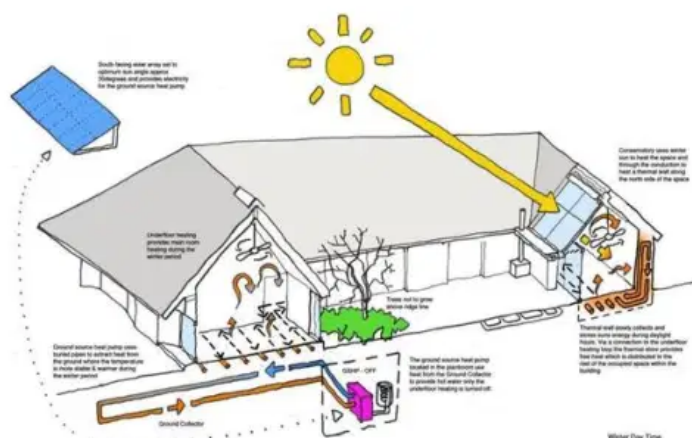
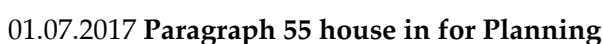
18.08.2017 **SCAS Central Training Facility in Newbury completed**

All stations go for the Southern Central Ambulance Service in Newbury with its impressive refurbishment of existing industrial premises. AMA were pleased to carry out the M&E performance specifications and drawings for the job.



01.08.2017 **New CIBSE TM59 on overheating assessment**

The latest CIBSE Journal introduces the new TM59 *Design Methodology for the Assessment of Overheating Risk in Homes*. The TM addresses the complex way buildings respond to external temperatures and presents a standardised methodology to dynamic thermal modelling of the overheating risk, which we welcome. In addition to the currently used criterion, the new TM includes more parameters to assess and to input. Read the full article [here \(https://www.cibsejournal.com/technical/using-tm59-to-assess-overheating-risk-in-homes/\)](https://www.cibsejournal.com/technical/using-tm59-to-assess-overheating-risk-in-homes/).



Sustainable Homes has identified that 80% of existing housing reviewed is at risk to overheat. This research supports our experience; controlling overheating without active cooling can be a challenge, especially as the climate warms. Our top three passive control measures for housing are; external solar shading; windows that enable cross ventilation and internal thermal mass to absorb excess heat. Read the full study [The Review Safe as Houses 2017](https://amaconsult.files.wordpress.com/2013/07/the-review_safe-as-houses-2017.pdf) (https://amaconsult.files.wordpress.com/2013/07/the-review_safe-as-houses-2017.pdf).

First staff have moved into the new SECamb Emergency Operations Centre and HQ in Crawley. AMA provided M&E and building physics services for the project. You can read more [here](http://www.secamb.nhs.uk/about_us/news/2017/new_hq_and_eoc.aspx) (http://www.secamb.nhs.uk/about_us/news/2017/new_hq_and_eoc.aspx).



(http://www.secamb.nhs.uk/about_us/news/2017/new_hq_and_eoc.aspx)

05.05.2017 **Undergraduate Placement**

We are looking to recruit an undergraduate architectural technologist or building services engineer to train and assist us with the following duties;

- Constructing thermal models of new and existing buildings on a variety of projects using IES.
- BIM modelling by carrying out Mechanical & Electrical Building Services design using Revit.
- Raising quotations and technical specifications for our sister company who are suppliers of external shading products.

To apply please email Vanessa@amaconsult.co.uk

23.03.2017 **RNOH MEP commissioning management**

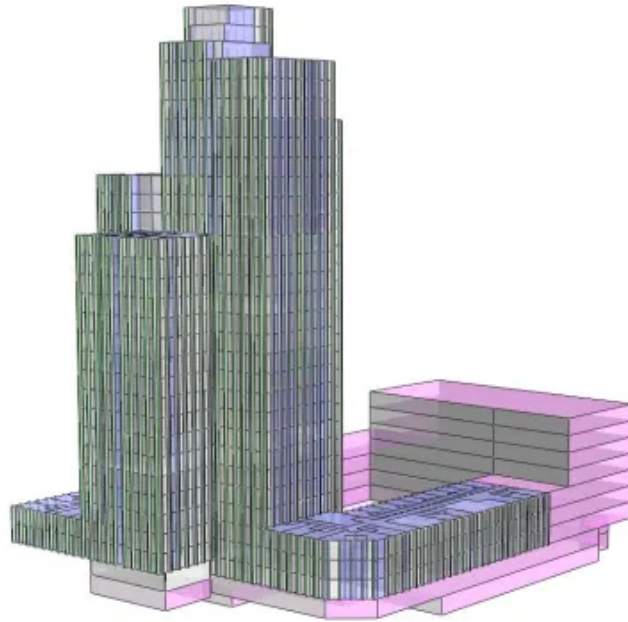
We have been appointed as MEP commissioning managers at the new inpatient ward block for the Royal National Orthopaedic Hospital NHS Trust. The new five storey building will provide 91 beds and is the first phase in the long term plans for redeveloping the Stanmore site. AMA are working for Balfour Beatty.

RNOH Stanmore inpatient ward block crane view 2.3.17



13.03.2017 **High rise student accommodation block**

AMA are employed by ProMEP to design mechanical services for a 32 storey high rise block in Stratford. The development includes three separate use areas; residential, academic teaching and student accommodation. The design incorporates central heating CHP plant serving heat interface units in building zones.

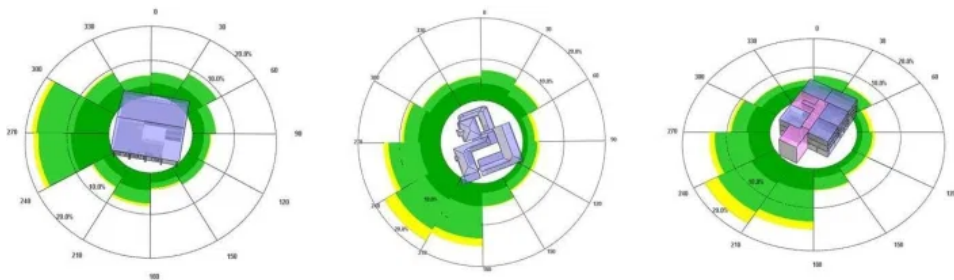


02.03.2017 **Congratulations to Manuel on MSc!**

Manuel has been awarded a Merit for his Building Services Engineering Master of Science course at London Southbank University. Manuel wrote his dissertation on simulation and real data comparison of a building using IES modelling.

28.02.2017 **School ventilation and overheating assessments**

We have recently carried out assessments in compliance with Building Bulletin 101. The assessment utilises IES and looks at CO2 concentration levels, ventilation provisions in learning spaces and summertime overheating risk in occupied areas. We were employed by Paine Manwaring to assess two new build schools, Rustington Community Primary School and Downlands Community School. NTC Designs architects appointed us to analyse the window replacement for Nightingale Academy in Edmonton.



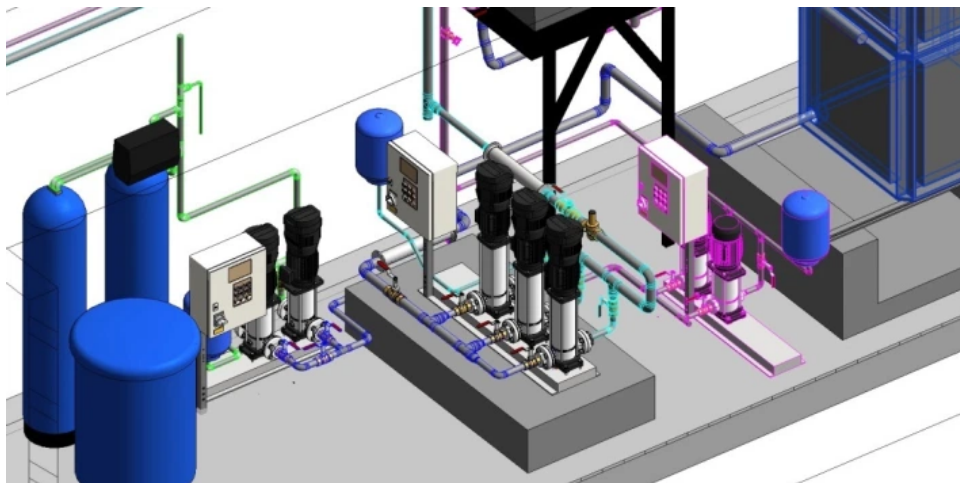
27.02.2017 **Award for recycling 2016**

Our annual recycling statement notifies that the past year we recycled 260kg of paper and cardboard, this is saving the equivalent of three trees and 370kg of CO2. All of the office paper is recycled and our efforts to reduce paper use are showing; this year the consumption is down by 28%!



13.02.2017 BIM modelling of plant rooms for Bank of America

We are partnering with Global Documentation (<http://global-documentation.com/>) on record information production for one of Bank of America's UK offices. We have carried out extensive M&E surveys, including Panono 360 photography and are using Revit MEP to build a 3D BIM model of plant rooms.



20.01.2017 Grade II Listed building refurbishment

AMA are working on the refurbishment of a Grade II Listed building situated in a conservation area. The building was originally a home to a wealthy family, having been used as financial sector offices until 2007. Planning permission has now been granted for a change of use to an educational facility. AMA duties include full M&E services design.

23.12.2016 Season's Greetings!

Merry Christmas and Happy New Year from all at AMA! Our offices are closing for the Christmas break on Friday 23rd December and reopening on Tuesday 3rd January. We look forward to working with you in 2017.



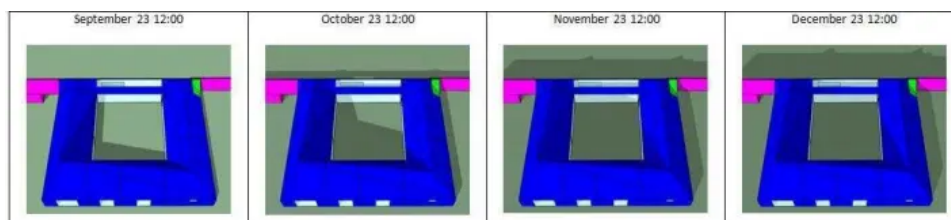
05.12.2016 **Marshall Burns supports RISEfest**

David Marshall's band Marshall Burns plays a gig at the RISEfest in Brighton. RISEfest is in aid of Rise (<http://www.riseuk.org.uk/index.asp#.WEIHMNKLrhE>), a Sussex charity helping those affected by domestic abuse. They work alongside survivors giving practical support to help them rebuild safer lives.



07.11.2016 **Paragraph 55 house in Mid Sussex**

AMA are providing building physics consultancy for a new Paragraph 55 house planning application in Mid Sussex. Paragraph 55 of the National Planning Policy Framework requires any project to be truly outstanding or innovative in the highest standard of architecture. Our initial work focuses on passive energy studies, including detailed solar, thermal mass and natural ventilation analysis.



26.10.2016 **Cian's work experience**

Varndean College student Cian Cox-Golding is at AMA this week for half term work experience. Cian has quickly picked up the basics of 2D drafting and 3D modelling with the use of AutoCAD and IES VE packages. Good luck to Cian with completing his final year at college and all the best for the future!

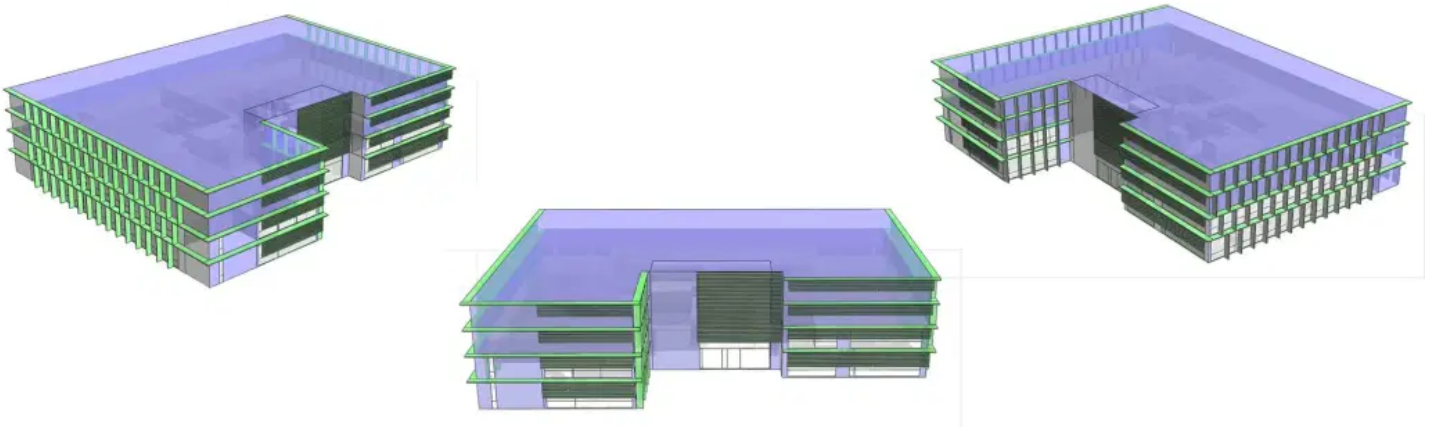
17.10.2016 SECamb progress update

Works are progressing at the new South East Coast Ambulance HQ. Fan coil unit alterations are now completed from existing cat A to cat B as the occupier requirements. Emergency chiller to provide resilience is on order. AMA have carried out further IES environmental modelling to include client specified internal gains and occupancy patterns. Works are due to be completed by the end of the year.



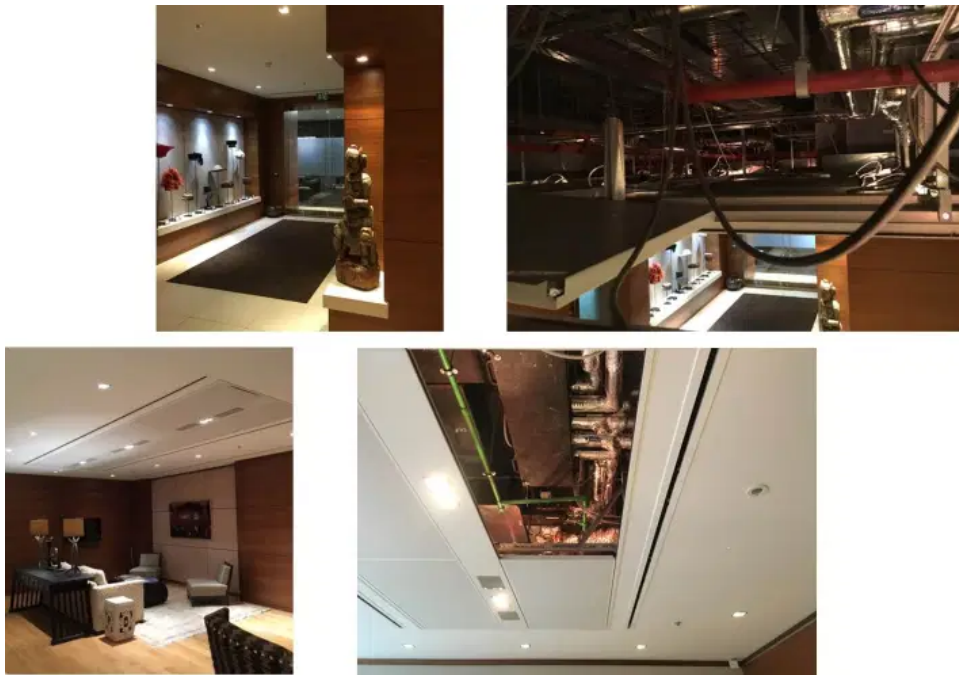
22.09.2016 South East Coast Ambulance HQ

AMA are working for M&E contractor Paine Manwaring, we are performing a number of duties on the SECamb HQ a life critical facility near Gatwick Airport for the local ambulance trust. Part of our initial work has been to perform environmental modelling to check the capacity of the existing cat A basebuild M&E services.



14.09.2016 Refurbishment at Standard Chartered Bank HQ

We are working for Global Documentation and Standard Chartered Bank on a refurbishment of a part of the ground floor of the Bank's UK Head Quarters, to create agile work spaces. AMA have carried out detailed M&E design.



13.09.2016 **Another record hot day**

Today is predicted to be the hottest September day in the UK for more than 50 years, link to article [here](http://www.bbc.co.uk/news/uk-37345436) (<http://www.bbc.co.uk/news/uk-37345436>). As environmental engineers we use tools like IES to dynamically model the thermal environment in buildings to predict how they will behave during extended hot periods, helping us to design buildings that keep cool in the warming climate.

20.08.2016 **Marshall Wace, Sloane Street London**

AMA are now part of Gratte supply chain, who are the mechanical and electrical contractors working on Marshall Wace's new 43,000 ft² London office. We have been employed to provide co-ordinated MEP services drawings and record drawings.

20.06.2016 **Sussex Community NHS Trust**

We are back working for Sussex Community NHS Trust who have employed us to design a replacement boiler plant to serve Conway Court Clinic in Hove. As part of the project we carried out thermal modelling of clinic.



20.06.2016 **BM Air projects**

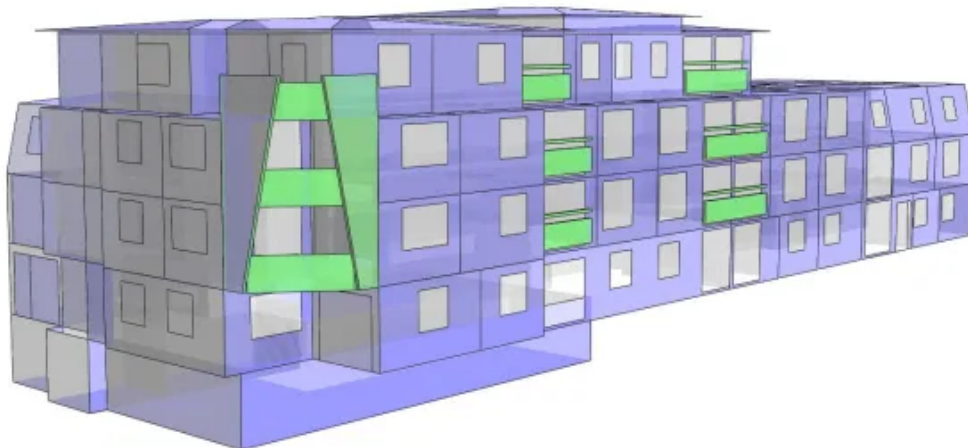
We are pleased to be working with BM Air on a number of projects providing mechanical services design. Projects include new NatWest branch of Fenchurch Street, upgrade projects for NatWest and RBS Bank, Legal and General offices and Pickhurst Junior Academy.



(<https://amaconsult.files.wordpress.com/2013/10/natwest-fenchurch-street.png>)

01.06.2016 Fawcett Road new mixed use block

AMA appointed to provide full MEP & building physics duties for a new BREEAM Excellent project in Southsea. The mixed use building includes student residential accommodation over three floors with ground floor doctor's surgery and pharmacy.



(<https://amaconsult.files.wordpress.com/2013/10/1280-fawcett-rd-ies-image-2.jpg>)

16.05.2016 SCAS Central Training Facility

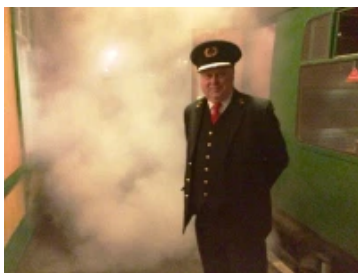
Good to be working again with South Central Ambulance Service NHS Foundation Trust, Murphy Philipps Architects and Arcadis Project management on a new education facility in Newbury.



South Central Ambulance Service **NHS**
NHS Foundation Trust

(<https://amaconsult.files.wordpress.com/2013/10/scas-logo-header1.png>)25.04.2016 **AMA return to the Bluebell Railway**

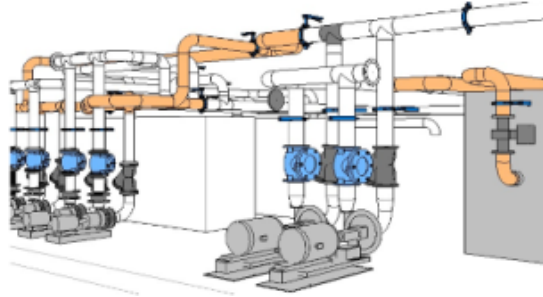
AMA return to the Bluebell Railway for an atmospheric steam train ride in the Sussex Weald.



24.03.2016 **All ready for BIM level 2**

AMA started investing in software and staff training two years ago to be ready for public sector BIM requirements starting next month. Managing Director, David Marshall explains; *"We immediately saw the benefits of using BIM as a design tool for M&E Services. BIM allows us to work live, visualise and present projects in 3D and in video (<https://youtu.be/k46I0UIEAAM>). It's a powerful tool, very engaging and efficient."*

AMA has successfully delivered several projects using BIM level 2 tools including International College at the University of Bournemouth. Click [here](https://amaconsult.files.wordpress.com/2016/02/ama-project-profile-international-college-university-of-bournemouth.pdf) (<https://amaconsult.files.wordpress.com/2016/02/ama-project-profile-international-college-university-of-bournemouth.pdf>) to see the Case Study. For more details on how AMA can help with BIM on your project, please contact David Marshall.



16.03.2016 Lewes FC Club Building

AMA have been appointed by the Lewes Football Club to provide MEP design concept for the new club building as part of the redevelopment of the Dripping Pan grounds.

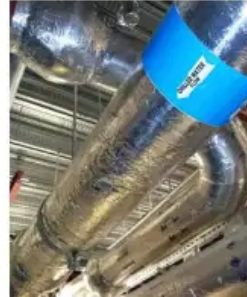
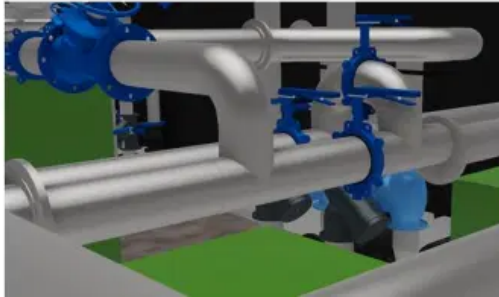
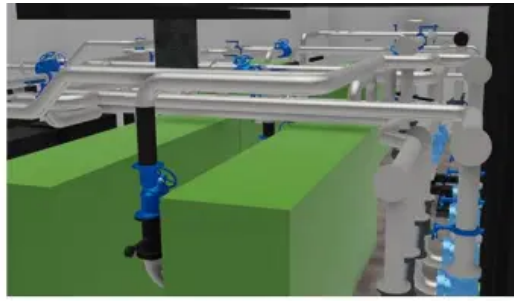
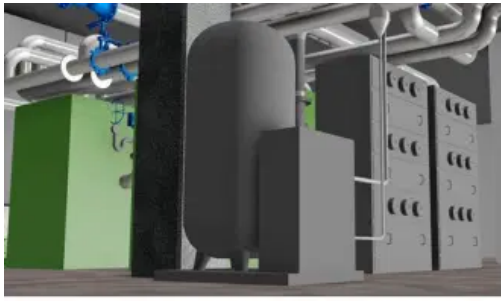


14.03.2016 Windlesham House School BIM Level 2

AMA are working for Kier and Paine Manwaring to provide BIM Level 2 mechanical services modelling for a new sports centre at Windlesham House School, an independent pre prep school in West Sussex.

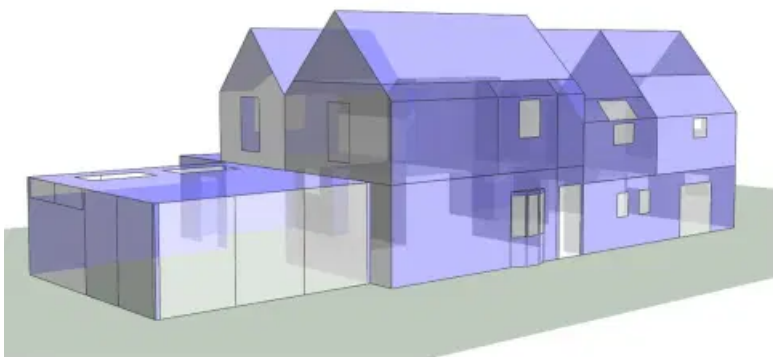
04.03.2016 SCB Chilled Water Optimisation Works

The chilled water optimisation works are nearing completion at the Standard Chartered Bank; mechanical works are now complete and the project is ready for commissioning. AMA have used RevitMEP for visualisations of the plant and pipework in the chilled water plantroom.



29.02.2016 **Laughton Cottage**

AMA and DH Design architects are working on the refurbishment of the Laughton Cottage in West Sussex. The project includes a two storey country house with an extension, separate pool house and a garden studio with workshop and garage. AMA are currently assessing low energy heating and hot water systems; we use tools like IES thermal modelling and Life Cycle Costing to evaluate options.



26.02.2016 **ED Reconfiguration at Royal Sussex County Hospital**

AMA have been appointed by Brighton and Sussex University Hospitals NHS Trust for the role of services engineer on the ED Reconfiguration Phase I project at Royal Sussex County Hospital, in conjunction with HDS Architects. News update: AMA appointed for Phase II of the works.



22.02.2016 **Recycling commitment**

AMA are committed to reducing their operational environmental impact, including recycling with local branch of Paper Round. In 2015 we recycled 360kg of paper and cardboard, this is equivalent of four trees and 500kg of CO2.



15.02.2016 A&E Department Redevelopment

AMA have been appointed by Brighton and Sussex University Hospitals NHS Trust for the role of services engineer on the redevelopment of the existing Accident & Emergency Department at Royal Sussex County Hospital, in conjunction with HDS Architects.

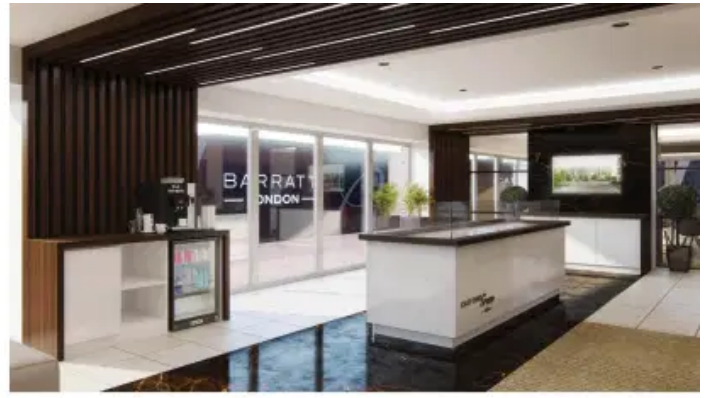
21.01.2016 Jamon tasting

AMA's annual jamon tasting evening brings a taste of Spain to Brighton. David Snr hand picked the jamon from Guijuelo, known as the superior quality Iberian ham. Manuel was at hand to show our guests from LCE Architects the jamon cutting technique.



15.01.2016 Marketing suites for Octink

We continue working for Octink to provide MEP services design for residential development marketing suites. Recent projects include Bicester Ecotown, Keybridge House, Madison Sales Office, Colindale Gardens Marketing Suite, Great Eastern Quays at Royal Albert Wharf and Catford Green. Images by Octink.



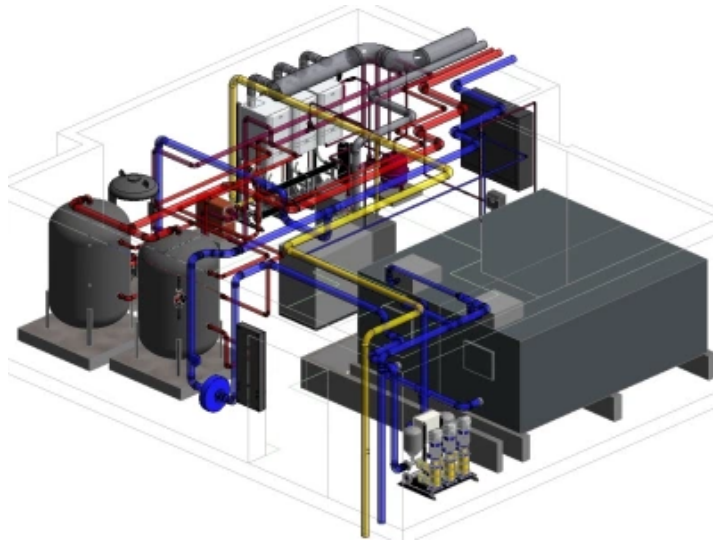
23.12.2015 Merry Christmas!

Season's greetings from all at AMA, we wish you a merry Christmas and a happy New Year! Our offices will be closing for the holidays on Thursday 24 December and reopen on Monday 4 January.



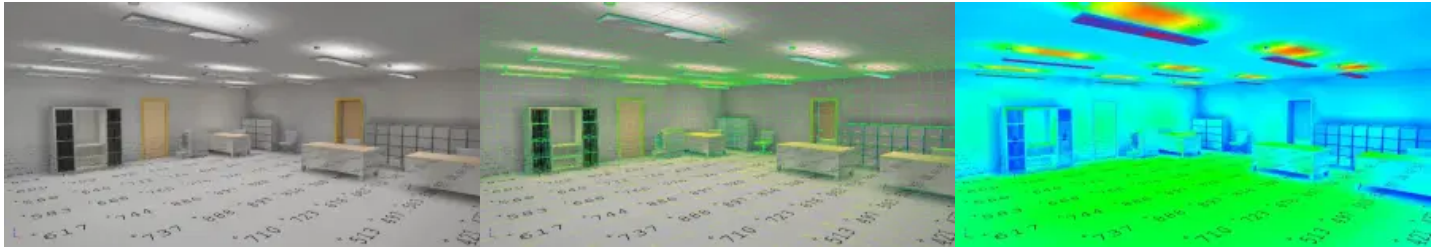
21.12.2015 Student Accommodation Projects

We are continuing working for ProMEP on another student accommodation project. This new build block in Walthamstow has seven storeys of student bedrooms, studio rooms, common kitchen/living rooms and reception area on the ground floor. We are using Autodesk Navisworks BIM tool to model the plantroom with detailed DHW services for co-ordination and installation.



03.12.2015 **ElumTools Lighting Calculations in Revit**

AMA are further developing our BIM skills by trialling a new integrated lighting calculation add-in for Revit. ElumTools calculates point by point illuminance on any workplane or surface utilising lighting fixture families and surface geometry already present in the Revit model.



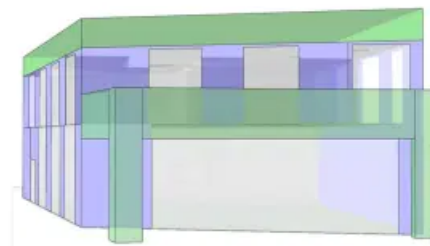
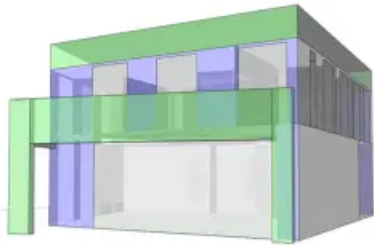
23.11.2015 **Network Rail Office Cat B Fit-out**

We are pleased to be working in East Croydon on a new Cat B office fit-out for Network Rail. Category B fit-out is the comprehensive fitting out of an office environment to the occupiers specific requirements. AMA are responsible for design of mechanical and electrical engineering services.



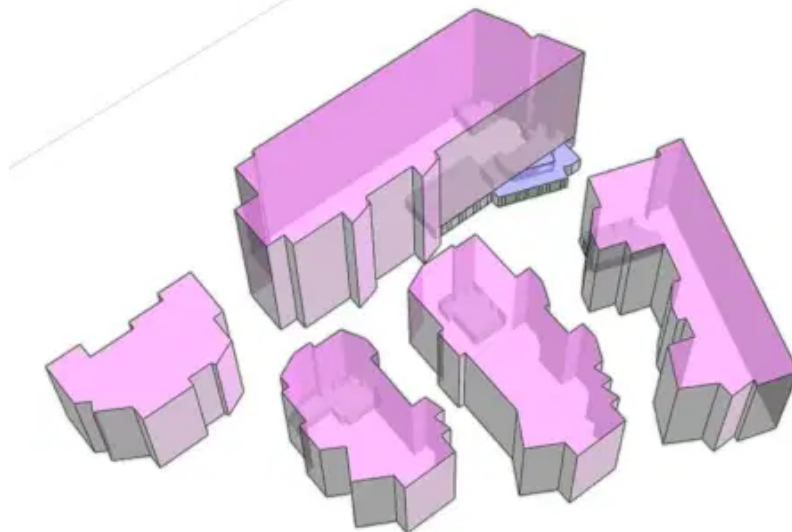
16.11.2015 **Marketing suite for Octink at Keybridge, Vauxhall**

The recently completed Keybridge marketing suite forms part of the on-going regeneration of Nine Elms in Vauxhall, London. AMA were appointed by Octink to carry out full MEP design duties, our method included thermal modelling of the building to establish heating and cooling loads (Photographs by Octink).



13.11.2015 Glasgow Student Accommodation

AMA complete mechanical services design and IES thermal dynamic simulation for ProMEP at five student accommodation blocks on Dunaskin Street in Glasgow. To check the requirement for mechanical cooling in key common areas, an overheating risk assessment and analysis of natural ventilation rates was carried out.



22.10.2015 PV Installation Completed

30kWp solar photovoltaic installation at Standard Chartered Bank's head quarters in London is completed. The images show the old poor ecological quality green roof, specialist green roof mounting frames and the newly installed panels with partially completed planting. The systems two work in synergy as the PV array offers shading & moisture for a more diverse fauna, where as the green roof helps to keep the panels cool and work more efficiently. This installation is the first solar green roof in the City of London.



16.10.2015 Wakelands Farmhouse Energy Modelling

AMA have carried out IES energy modelling and Life Cycle Costing to establish best suited low energy services options for the Wakelands Farmhouse on the Glyndebourne Estate in East Sussex. The historic building would greatly benefit from improvements to the building fabric and the inclusion of low & renewable energy technologies, this would reduce the heating and hot water related CO2 emissions by around 74%.



16.10.2015 Standard Chartered Bank ESOS Notification Submitted to the Environment Agency

The Energy Savings Opportunities Scheme (ESOS) audit is now completed for the Standard Chartered Bank. The Environment Agency administered scheme implements Article 8 of the EU Energy Efficiency Directive in the UK. An energy audit is carried out to quantify energy consumption and to identify feasible recommendations for energy savings. The ESOS notification was submitted within the first 5% of the over 9,000 of Britain's biggest companies that are required to comply.



08.10.2015 Sanitary and Rainwater Drainage Training

AMA's mechanical engineers Manuel and David attend a CIBSE course for an update on the latest sanitary and rainwater drainage design regulations and British Standards.

06.10.2015 Cafe project completed

AMA provided MEP services design and Part L compliance duties for a new Cafe building in West Sussex. The building is served by a high efficiency heat pump for heating, cooling and hot water, 17kWp solar photovoltaic installation is included. AMA carried out extensive modelling with Revit for visualisations and IES for compliance and dynamic thermal calculations.



The official opening event of the Sports Pavilion included the presentation of the Webb Ellis Cup trophy on its 100-day tour, building-up to Rugby World Cup 2015. AMA have been involved since the early design stages of the Sports Pavilion, a new building that houses sporting and changing facilities. The building is designed to BREEAM Excellent and is set in the thermally stable earth bank with a roof top PV array and a waste water heat recovery system.



26.08.2015 Princess Royal Hospital Ansty Ward Refurbishment

AMA are appointed by the Brighton and Sussex University Hospitals NHS Trust to carry out full MEP engineering services for the refurbishment of the Ansty Ward at the Princess Royal Hospital in Haywards Heath. The existing in-patient ward dates from 1991 and will undergo refurbishment to accommodate urology patients, some of whom stay overnight.



20.08.2015 Jerome's Work Experience

Jerome has been at AMA offices this week for a work experience. He helped us with live projects, working on AutoCAD dwg and dxf files and generating an IES model. Jerome is currently doing his A Levels with focus on engineering related subjects and we wish him good luck with completing his current studies and applying for university.

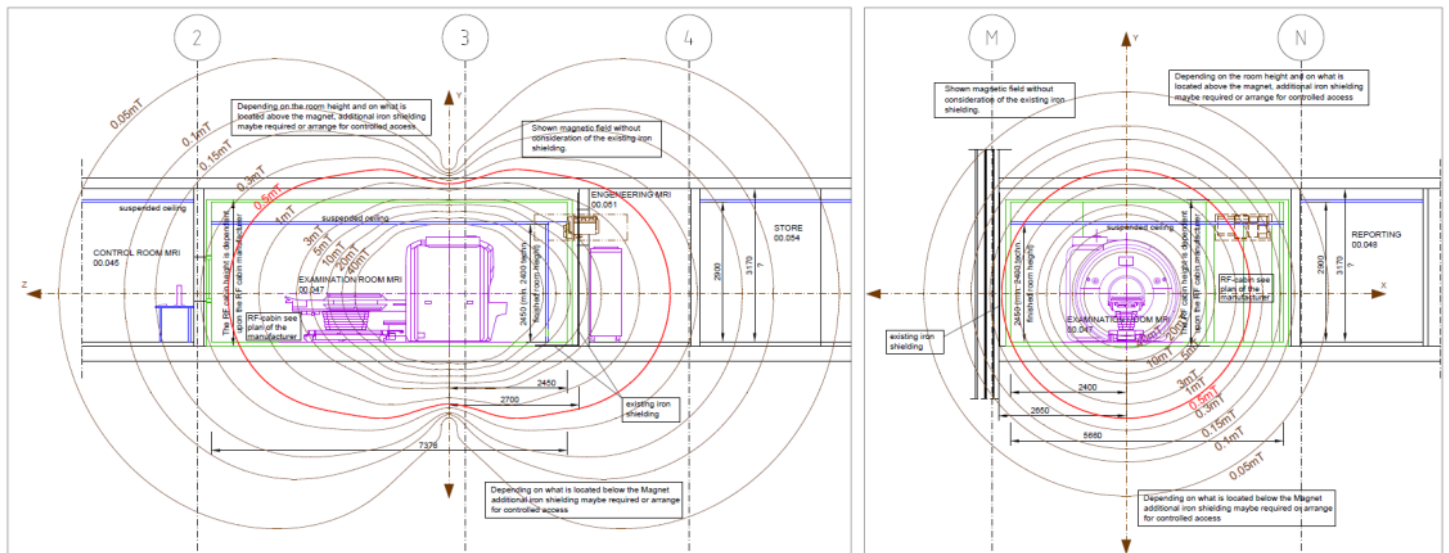
06.08.2015 Royal Sussex County Hospital

AMA are appointed by the Brighton and Sussex University Hospitals NHS Trust on the Theatre Admissions project at the Royal Sussex County Hospital to carry out full MEP engineering design services. This project is close to our offices in Brighton, giving David and Adrian an opportunity to travel to site by the sustainable transport mode of a tandem bike.



01.08.2015 Queen Elizabeth II Hospital

AMA complete CT Scanner and x-ray rooms project at the new Queen Elizabeth II Hospital in Welwyn Garden City. We were employed by Balfour Beatty to carry out M&E services design for the specialist medical equipment rooms. The MRI examination room sections show the equipment magnetic field without consideration of the iron shielding.



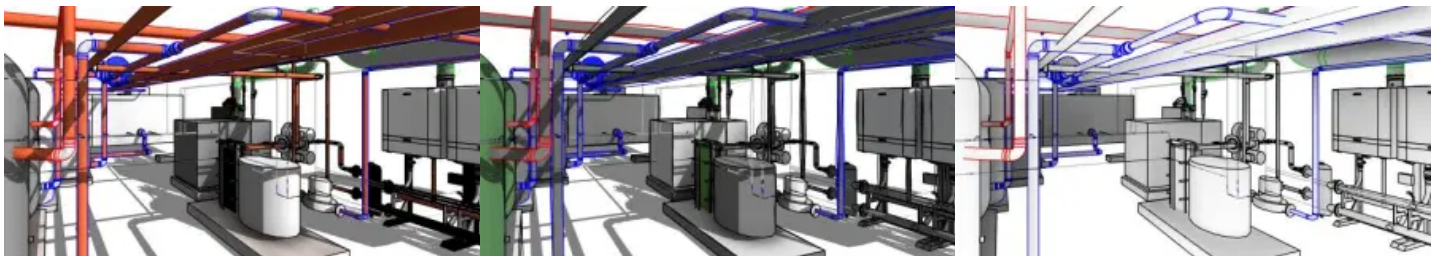
17.07.2015 The Bluebell Railway

AMA enjoy an evening on the Bluebell Railway in the Sussex Weald. The Bluebell Railway is an operational steam hauled train and a living museum with beautifully preserved engines, carriages and stations. Our evening started at Horsted Keynes station where we boarded the Real Ale Special service, the ride took us across the countryside on the historic single track railway, making stops at the restored stations for supper, jazz and an opportunity to take a closer look at the steam engine.



16.07.2015 New Student Accommodation

AMA are working for ProMEP designing domestic hot and cold water services for new high rise student accommodation. The plant design incorporates CHP with gas fired boilers and the interesting plantroom design has given us the opportunity to use Autodesk Revit MEP and provide BIM Level 2 drawings.



15.07.2015 Grade I Listed Building Refurbishment Complete

AMA were employed by Paine Manwaring to redesign heating for the refurbishment of a Grade I listed Victorian building at Sussex Square in Brighton. The building is occupied by EF International Language Centre and includes classrooms and a cafeteria. The original cast iron radiators were flushed, filled, pressure tested and commissioned. We also provided working drawings and record drawings for the MEP contractor.



03.07.2015 **Worthing Hospital HR Department Office Suite Conversion**

AMA employed by Kier to provide MEP design services for the conversion of an existing day nursery to a new office suite serving Worthing Hospital NHS Foundation Trust Human Resources department. We have used Autodesk Revit to design the MEP systems and to produce rendered images.





Loading...

View the BIM level 2 RevitMEP model walkthrough <https://youtu.be/k46I0UIEAAM>
(<https://youtu.be/k46I0UIEAAM>).

02.10.2015 **Interventional Rooms at Worthing Hospital**

AMA are providing full MEP engineering services for the new HTM compliant interventional radiology suites at Worthing Hospital. Interventional radiologists use digital imaging to see inside the patient while performing treatment or exploratory procedures. The project is currently under construction and MH Architects have produced visuals of what the rooms will look like.



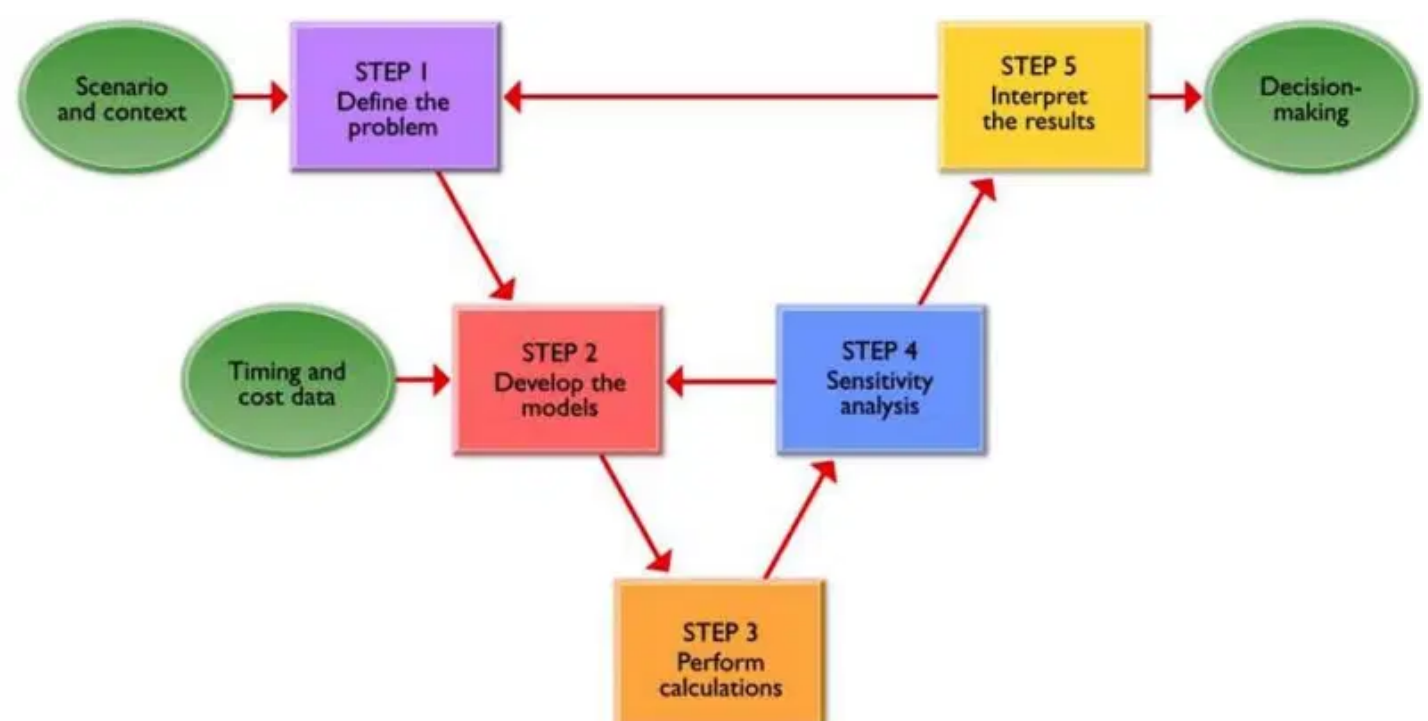
01.09.2015 **Opening of the Falmer Sports Pavilion**

Loading...

View the BIM level 2 RevitMEP model walkthrough <https://youtu.be/J9daJCGRs-I>
(<https://youtu.be/J9daJCGRs-I>)

01.07.2015 Life Cycle Costing Training

AMA's David and Hanna go to a BSRIA Life Cycle Costing training course with specific focus on MEP services. The course focuses on the economic appraisal of decisions and the prioritisation of maintenance and equipment replacement budgets. Advanced LCC techniques, such as modelling complex life cycles and sensitivity analysis, are studied and applications such as prioritising projects within a limited budget and using LCC data to predict actual expenditure profiles.



10.07.2015 **Boundstone Nursery & Daycare Centre**

Local architects Moshin Cooper, who we worked with at Boundstone Nursery School on a new atrium infill, have kindly sent us some photographs of the completed scheme, their scale model and a before shot of the site as an open courtyard. AMA worked with the architects providing performance M&E design, including overheating and daylight analysis using IES Virtual Environment to assist with the design of rooflights for sufficient ventilation and natural light.



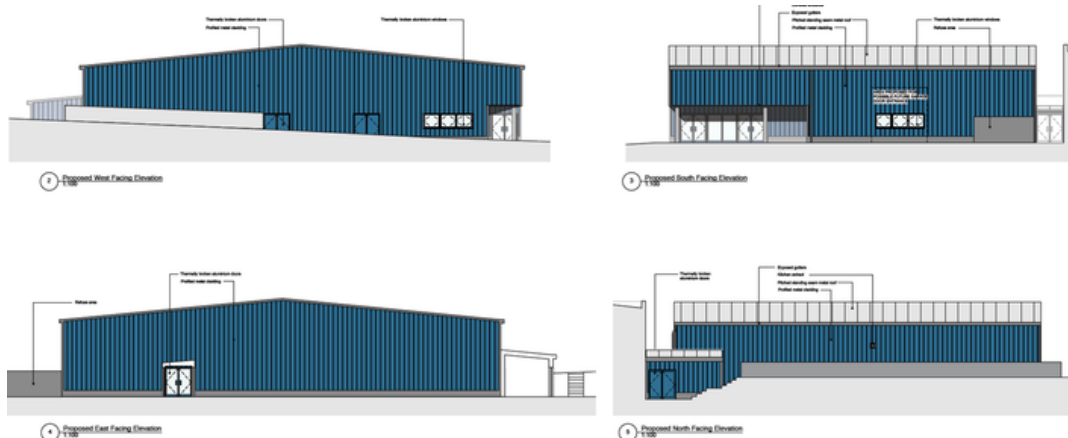
26.06.2015 **Constructionline Membership Renewed**

AMA are members of Constructionline (<http://www.constructionline.co.uk/static/>), the UK's leading procurement and supply chain management service. All members are required to meet BSI developed pre-qualification requirements appropriate to public and private sector procurement, this ensures meeting of industry and Government standards.



25.06.2015 **New Food Production Facility**

AMA are working for BBM Sustainable Design Ltd architects on a new facility for BD Foods near Hastings. The facility is a new with food production area, staff canteen and staff changing area. The image below shows proposed elevations by the architect and AMA's Adrian in his food hygiene compliant survey kit.



19.06.2015 David is Fundraising for the National Autistic Society

AMA's David Marshall is taking part in Ride London-Surrey (http://www.prudentialridelondon.co.uk/The_Events/100.htm), a 100 mile bike challenge on Sunday 2 August 2015 to raise money for the National Autistic Society. The ride starts in the Queen Elizabeth Olympic Park and follows the 2012 Olympic route into Surrey countryside, finishing in central London on The Mall. For more information about this story and how to donate please see David's fundraising page:

www.virginmoneygiving.com/davidmarshall21 (<http://www.virginmoneygiving.com/davidmarshall21>).



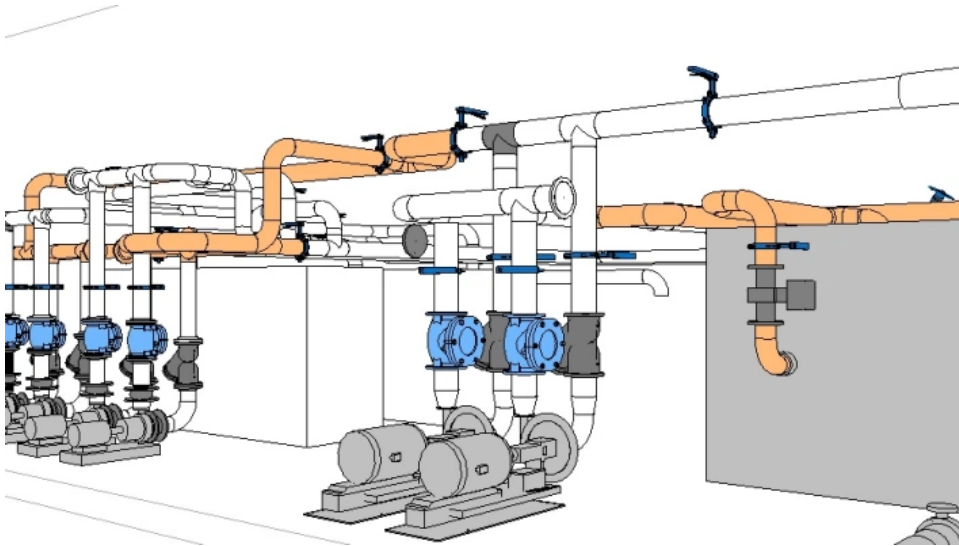
UPDATE : Thankyou to all for your kind donations, £844 was raised for the National Autistic Society. David's data and notes from the day;

1. 100 miles completed in 5hrs 47mins, including a couple of feed and water stops.
2. Sudocrem works.
3. Didn't realise the additional 20 miles involved in finding the start and then riding back from the finish to my car at the O2. Thanks to random stranger who had a sat nav on his bike that I followed back to the O2.



01.05.2015 Chilled Water System Optimisation

AMA are working for the Standard Chartered Bank on a chilled water system optimisation at their London Head Offices. The critical and base built chilled water systems are optimised to reduce associated energy consumption. We are using Revit to produce drawings and design information for the project.



20.04.2015 Vacancy for an Associate Mechanical Services Design Engineer

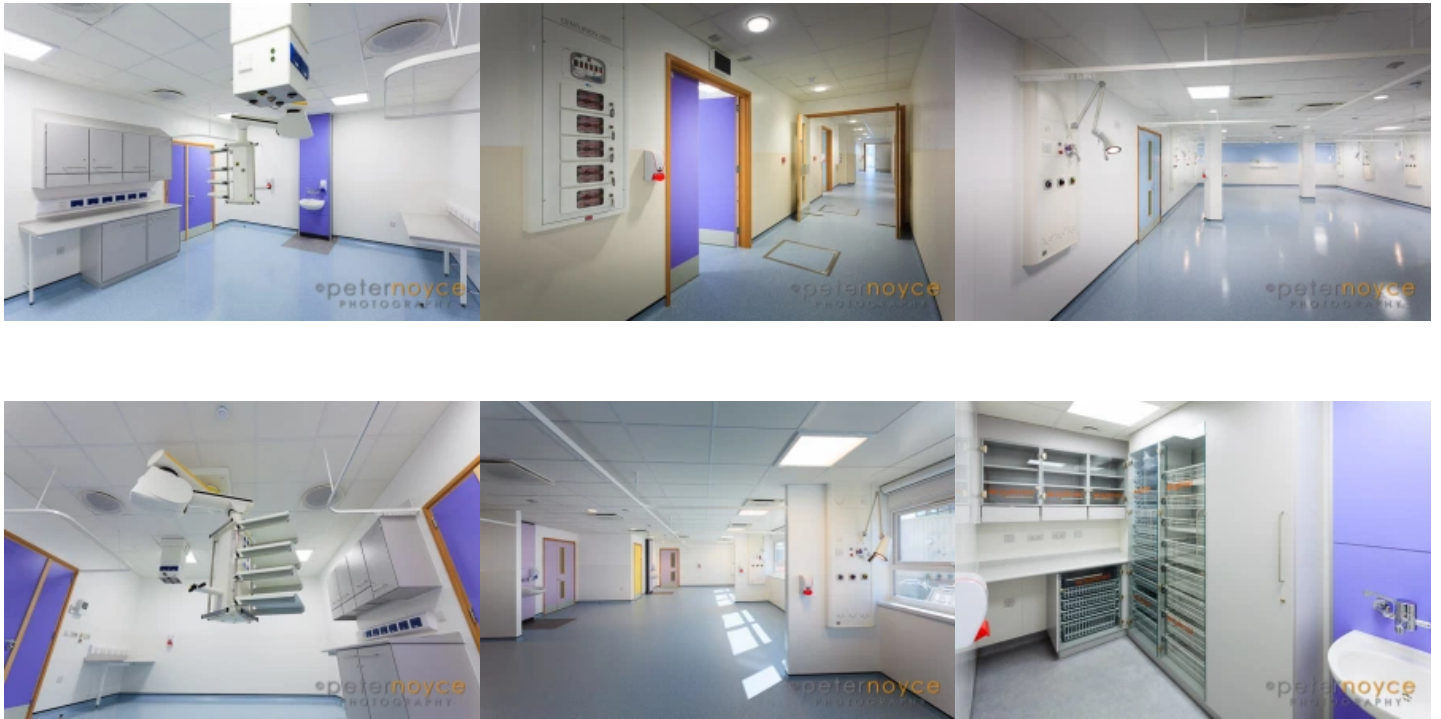
AMA are recruiting an Associate Mechanical Services Design Engineer to join their building services consultancy in Brighton. You will be working in a small team on diverse and interesting projects including hospitals, schools and other commercial work. Responsible for mechanical services design of projects from inception to completion, you should have good communication and client facing skills. Desired skills and experience:

- HND/Degree qualified in Building Services Engineering
- 10 years' experience in mechanical services including heating, ventilation, comfort cooling, and domestic hot/cold water services.
- Experience using Hevacomp, IES and Autocad
- Full driving licence

We offer a competitive salary, a good working environment with opportunities for training and personal development. For more details please contact vanessa@amaconsult.co.uk

17.04.2015 Endoscopy Phase 1 Handed Over

Phase 1 of the £5 million Worthing Hospital Endoscopy project is handed over. The five state of the art endoscopy treatment rooms are a part of the refurbishment of the existing building that includes a new building infill in the old internal courtyard. AMA carried out full M&E services design and are appointed for Phase 2.



02.04.2015 ESOS Certified Lead Assessor

AMA's Hanna Ylitalo is now a fully certified Energy Savings Opportunity Scheme (ESOS) Lead Assessor. ESOS is the UK Government's approach to implementing *Article 8 of the EU Energy Efficiency Directive*, it is mandatory in the UK, requiring all large undertakings to carry out regular energy audits, overseen by Lead Assessors, to demonstrate compliance with the scheme.



(<https://www.gov.uk/energy-savings-opportunity-scheme-esos>)

05.01.2015 Welcome to Adrian Burgess

AMA welcome Adrian Burgess who has been appointed as our new Associate Electrical Engineer. Adrian is a valuable addition to our team, bringing extensive knowledge and experience in the design and project management of commercial and residential projects.

24.12.2014 Season's Greetings!

Merry Christmas and Happy New Year from all at AMA! We have a busy holiday period planned with our Brighton office refurbishment. The office will reopen on Monday 5th January 2015.

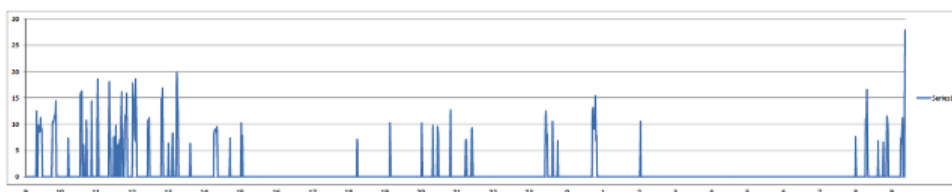
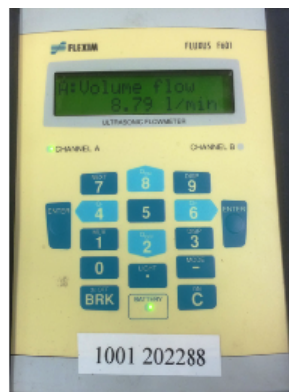
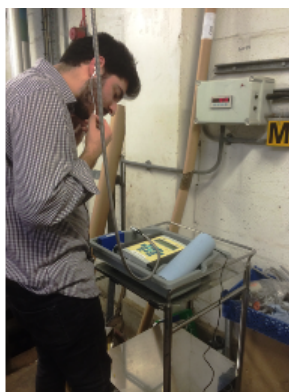


19.12.2014 Kent County Cricket Club Hand Over

The new Kent County Cricket Club building in Beckenham is handed over to the client. The new building includes an indoor cricket training hall and a spectator stand building with a bar lounge and physiotherapy and fitness rooms. AMA were appointed by Connect to design mechanical and electrical services and to assist with Part L compliance.

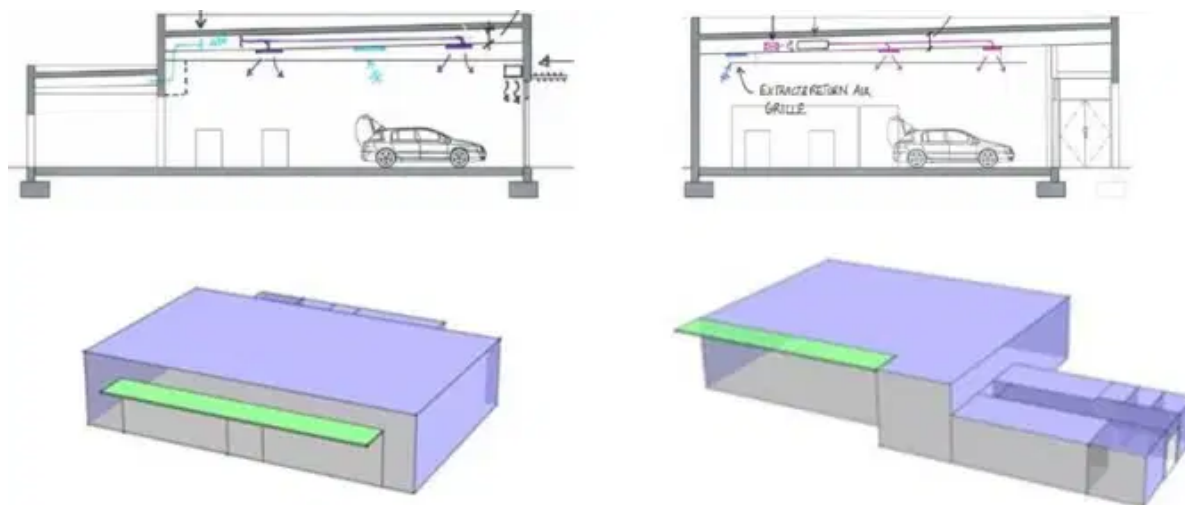
14.01.2014 Ultrasonic Flow Meter at Eastbourne Hospital

AMA are using ultrasonic flow meter to collect domestic hot water consumption data at Eastbourne Hospital. This real time data will be used to accurately size a new steam DHW plant for the Sussex Partnership NHS Trust Hospital. As BSRIA members AMA have access to calibrated instruments that we use for specialist projects. In this instance the collection of real time data in the existing building enables very accurate system sizing based on real consumption, this will improve the system efficiency.



05.12.2014 Ricardo Centenary Museum

AMA appointed by ES Connect to provide a feasibility study for M&E and renewable energy options for the proposed Ricardo Centenary Museum near Shoreham Airport. Ricardo are a leading engineering, technology and innovation provider in the automotive industry. The new building will be primarily used as a museum space exhibiting cars and engines, the main space will also be used as a conference facility.



03.12.2014 **St Paul's Catholic College Extension**

AMA complete the design of mechanical services for the classroom and science laboratory extension at St Paul's Catholic College. We were appointed by Humphrey Heating to extend the existing system to provide underfloor heating, ventilation and gas services to the extension.

24.11.2014 **Blood Sciences at St. Richard's Hospital**

The Blood Sciences project at St. Richard's Hospital is completed. The project included the relocation of the Blood Sciences into newly refurbished laboratory within St. Richard's Hospital. AMA carried out full M&E services design, including IES thermal dynamic analysis, cooling for the 50kW equipment heat gains, specialist conditioned water supply and drainage system for specialised medical waste.

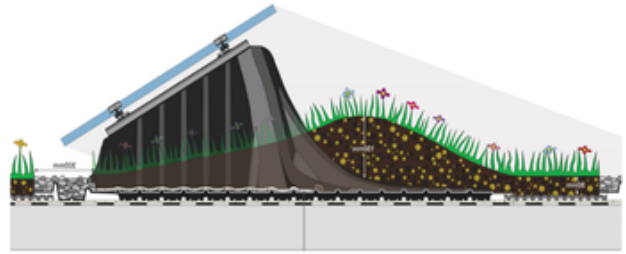


17.11.2014 **ESCC School Extensions Feasibility Studies**

AMA appointed by White Design Associates to carry out environmental appraisals of various East Sussex County Council school extension. The reviews include building services feasibility studies and recommendations of suitable renewable technologies. Thermal dynamic modelling is used for risk of overheating and natural ventilation assessments.

20.10.2014 **Green Roof and Solar PV Array Synergy at SCB London**

AMA are working on an innovative solar photovoltaic (PV) solution for the Standard Chartered Bank's London HQ Building. The new PV installation will be mounted on special platforms that are specifically for green roofs and include a 'wicking' capillary fleece that draws water to vegetation under the panels. The two technologies work in synergy and enhance each other; the evapotranspiration of the plants cools the PV panels improving their efficiency and the PV panels provide shade and additional moisture to the vegetation. Important species (Toadflax Brocade Moth, Brown Banded Carder Bee and Black Redstart) are already visiting the green roof and the new installation will enhance local biodiversity as there is potential to add floristic variety and therefore increase the fauna.



09.10.2014 **National Recognition for AMA Project**

AMA hospital project wins national recognition. Worthing Hospital Emergency Floor has been chosen by the Royal College of Physicians' as a development site for the Future Hospital programme that focuses on improving the care of patients. You can read more in this [article](http://www.theargus.co.uk/news/11524461.Shake_up_of_emergency_department_wins_national_approval/) (http://www.theargus.co.uk/news/11524461.Shake_up_of_emergency_department_wins_national_approval/) by the Argus.

23.09.2014 **BSRIA Membership**

AMA are members of the Building Services Research and Information Association (BSRIA). This association is a test, instruments, research and consultancy organisation, providing specialist services in construction and building services. Being accepted as a member demonstrates AMA's credibility within the industry and provides assurance to our clients that we have access to the latest independent thinking.



(<https://www.bsria.co.uk/>).

18.09.2014 **Manuel Begins Masters Degree Studies**

AMA's Manuel Carrasco has begun his Masters Degree at the London South Bank University. Manuel will complete the Building Services Engineering MSc part-time over 28 months while carrying on with his work at AMA. The course is well recognised within the industry and fully accredited by CIBSE. Manuel is looking forward to broadening his knowledge with leading academic experts in the field of building services engineering.

**London
South Bank
University**



30.08.2014 **Low Carbon Consultant Accreditation**

AMA are now fully accredited [CIBSE Low Carbon Consultants](https://www.cibseenergycentre.co.uk/energy-certificates/cibse-low-carbon-consultants.html) (<https://www.cibseenergycentre.co.uk/energy-certificates/cibse-low-carbon-consultants.html>). AMA's Hanna Ylitalo is a qualified LCC Building Design and Simulation specialist after completing the training and exams with our technology partners IES and CIBSE for the

upgrade of the revised Part L 2013 regulations. Low Carbon Consultants can confirm Part L2A Compliance, advise on energy efficiency and conservation, design low carbon and renewable energy technologies and use passive design technologies to make the best use of shade and natural ventilation.



25.06.2014 Falmer Sports Pavillion

AMA are retained by the University of Brighton, working for LCE Architects to oversee the MEP design and installation of the new Sports Pavillion on the Falmer Campus. The new sports facility building incorporates renewable energy technologies and is designed to achieve BREEAM Excellent rating.

28.05.2014 BIM Integration

AMA are further investing in in-depth specialised training with our technology partners IES Virtual Environment and Autodesk Revit. We are focusing on detailed building physics and mechanical services analysis with IES ApacheHVAC and using Revit to ease the understanding of increasingly complex plant areas. This training keeps us ahead of the game for the increasing requirement of BIM implementation and its technological challenges.

21.04.2014 Worthing Hospital West Block Refurbishment

AMA appointed by Kier to design MEP engineering services for a new £4.5 million endoscopy facility at Worthing Hospital. The project involves refurbishing existing areas as well as the construction of a new ground floor section within the existing West Block. We are approaching this project by front loading with detailed surveys of existing services and workshop meetings with facilities and maintenance teams, to enable us to put together a detailed design package including engineering enabling works.

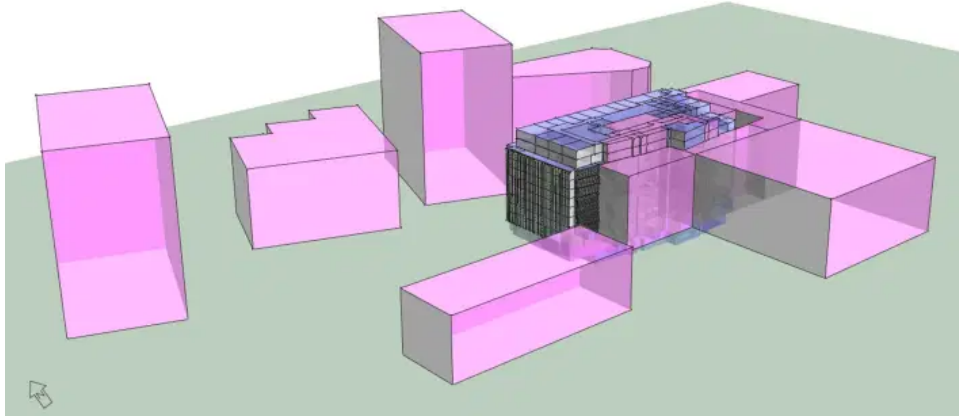
20.03.2014 Ambulance Facility Completed

The new South East Hants Resource centre, a new ambulance make ready facility was completed and handed over to the client South Central Services NHS Trust. AMA have been involved from inception to completion, providing performance MEP specifications and drawings. The facility is located in Cosham, and has been incorporated into an existing industrial building.



15.03.2014 Standard Chartered Bank Energy Efficiency Projects

AMA and [Global Documentation \(http://www.global-documentation.com/\)](http://www.global-documentation.com/) are working together on a number of projects at the Standard Chartered Bank's London offices. Our projects include assessments of existing services and building optimisation to achieve the client's aspiration for a more energy efficient and low carbon building. We have used IES thermal dynamic modelling to assist in predicting the building energy performance in detail.



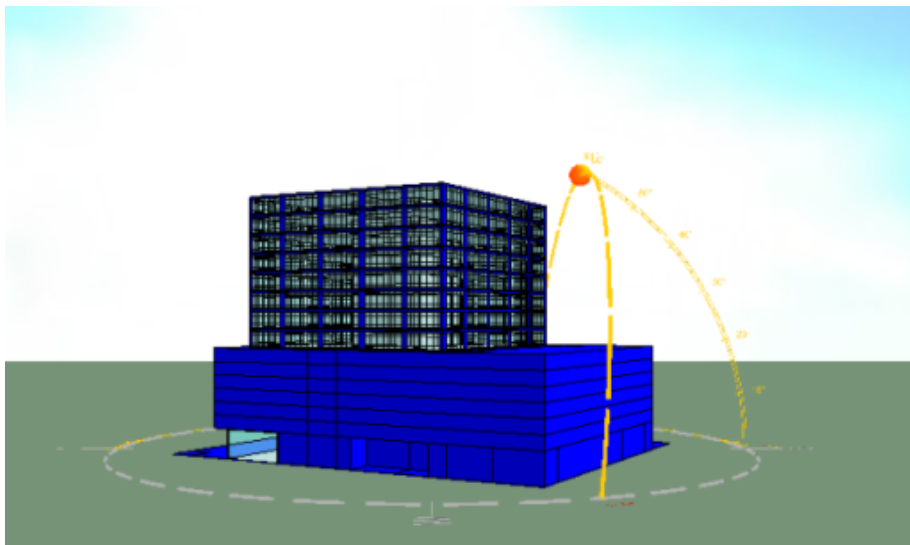
11.02.2014 CIBSE Awards Dinner

AMA and our sister company Enviroblinds (<http://enviroblinds.co.uk/>), attend the CIBSE Building Performance Awards 2014. We were shortlisted in the Energy Saving Product of the Year (<http://www.cibseawards.org/shortlist/>) category for our work in pioneering the use of external roller blinds as an energy saving device in the UK. We all had a great night but unfortunately did not win this year.



18.01.2014 Energy Assessment for SCB Ghana

We are pleased to be working with Global Documentation (<http://www.global-documentation.com/>) on an energy assessment for Standard Chartered Bank's new regional HQ in Accra, Ghana. We have used IES thermal dynamic modelling to assist in predicting energy outcomes resulting from alternative renewable technologies.



20.12.2013 **Merry Christmas**

Seasons Greetings from all at AMA! We wish you a Merry Christmas and a prosperous New Year.



16.12.2013 **Brighton Landmark Building**

AMA have started work on a local landmark building, the old Co-op Department Store in London Road Brighton. The site is very close to our office and the first project we can see from our window. We are designing mechanical services and working for Techelec. The façade of the old building is retained and a new structure is created behind it, the new building includes commercial space and 355 bed student accommodation.



13.12.2013 **Return to Gatwick Airport**

We are back at Gatwick South Terminal after 15 years! We are designing mechanical services for the Skybreak Service Desk and working for Techelec. The technology used in our daily work has greatly developed since our last project here; our drawings are AutoCAD or Revit for BIM projects, we use IES Virtual Environment thermal dynamic software, Amtech ProDesign for electrical design, DIALux and RELUX for lighting design, communications are via emails, smartphones and tablets are with us everywhere, we have WiFi, Cloud, DropBox, LinkedIn, social media... Whatever next?

11.12.2013 **Rockdale Care Home**

We have commenced design work for Mansell at Rockdale, a charitable Housing Association in Sevenoaks. The Rockdale project includes a new 48 bedroom care home for the elderly, 29 new sheltered apartments and the refurbishment of the existing Rockdale House.



09.11.2013 **Rusthall Lodge Generator**

Our generator project is complete for Rusthall Lodge Housing Association. The standby generator is sited within the grounds of the nursing home and housed within an acoustic enclosure limiting the noise levels. The generator will run during periods of disruption to the local mains network or during planned maintenance periods. AMA have provided full electrical services design and project management, including applying for and obtaining Planning Permission.



15.11.2013 **Olympic Park Marketing Suite**

AMA are working on a new project for Octink to provide MEP services design at the Chobham Manor. The building is a marketing suite forming part of a wider residential development; the first new neighbourhood in the Queen Elizabeth Olympic Park. The demountable temporary structure will be in place until 2018 and utilises the same demountable construction technology used on the Olympic Park during London 2012. Indicative illustration by Octink.



13.11.2013 Worthing Hospital Emergency Floor

The mechanical and electrical services being installed in the existing ground floor of the East Wing in Worthing Hospital, part of the new Emergency Floor project. The project is being completed in phases, adjacent to live working clinical areas.



31.10.2013 CIBSE Awards Shortlisting

AMA and our sister company [Envirolblinds](http://envirolblinds.co.uk/) (<http://envirolblinds.co.uk/>) are delighted to be shortlisted in the [Energy Saving Product of the Year](http://www.cibseawards.org/shortlist/) (<http://www.cibseawards.org/shortlist/>) category for the [CIBSE Building Performance Awards 2014](http://www.cibseawards.org/) (<http://www.cibseawards.org/>). The CIBSE Building Performance Awards recognise the businesses, teams, products and projects that demonstrate engineering excellence in the built environment. The AMA and Envirolblinds team are nominated for their work in pioneering the use of external roller blinds as an energy saving device in the UK. Read more about our research work and details of the energy saving product on the Envirolblinds site [www.envirolblinds.co.uk](http://envirolblinds.co.uk/) (<http://envirolblinds.co.uk/>).



14.10.2013 Pathology Block Refurbishment at St Richard's Hospital

Design process cooling for new blood analysers at St Richards Hospital, Chichester, connecting to the existing site chilled water system. Part of continuing refurbishment works of the existing Pathology Block.



01.10.2013 Welcome to Manuel Carrasco

AMA welcome a new member of staff, Manuel Carrasco. Manuel has a background of mechanical building services engineering design and site management with a BEng in Building Engineering from Universidad Politecnica of Madrid. Manuel is appointed as a mechanical engineer.

03.09.2013 Goodwood Racing

AMA go to the horse races at Goodwood. The group were treated to a beautiful sunny day with the excitement of the betting and the races.



15.06.2013 Feasibility Studies on the Isle of Wight

AMA have been appointed by the Isle of Wight NHS Trust to carry out a feasibility study into engineering services for 3 new facilities, MAU, Endoscopy and Ophthalmology.

13.06.2013 KTP Conference Presentation

AMA attend KTP Associates Conference (<http://www.brighton.ac.uk/ccp/ktp/ktp-conference-2013/>) at the University of Brighton where Hanna Ylitalo presents a paper and poster titled “Environmental performance of external roller blinds in the UK (https://amaconsult.files.wordpress.com/2013/07/ktp-conference_environmental-performace-of-external-roller-blinds-in-the-uk_hanna-ylitalo.pdf)” summarising the findings of the AMA and University of Brighton Knowledge Transfer Partnership (KTP) academic research collaboration to date.

12.06.2013 Cricket at the Ageas Bowl

AMA go to t20 cricket at the Ageas Bowl to see Hampshire Royals v Sussex Sharks. AMA supported the Sharks who won the toss and elected to bat, in the end Hampshire won by four wickets.

07.05.2013 Academic Research Presentation at CIB Brisbane

AMA and University of Brighton academic collaboration paper “Environmental benefits of external roller blinds retrofit for offices in the United Kingdom (https://amaconsult.files.wordpress.com/2013/07/cibwbc-2013-paper-environmental-benefits-of-external-roller-blinds-retrofit-for-offices-in-the-united-kingdom_final.pdf)” is presented by Dr Kenneth Ip of University of Brighton at the CIB World Building Congress (<http://worldbuildingcongress2013.com/>) in Brisbane Australia. CIB (<http://www.cibworld.nl/site/home/index.html>) is the International Council for Research and Innovation in Building and Construction, a worldwide network of experts with a research, university, industry or government background. This paper includes a Life Cycle Assessment (LCA) of the external roller blinds – the results show that the device’s embodied carbon payback period can be as short as six months.



17.04.2013 Cosham Health Centre Refurbishment

AMA have been employed by Mansell as MEP consulting engineers to provide full MEP professional services for the refurbishment of the existing Vanguard Building in Cosham, Hants, which will become a new health centre. The project gives us the opportunity to continue using our MEP Revit software to help develop the BIM model of the project.

12.03.2013 Our Carbon Reduction Commitment

AMA sign up for Brighton and Hove 10:10, a campaign where all participants cut their carbon emissions by 10% in a year, and keep going the next year. AMA are committed to reducing our current calculated carbon footprint of 2.9 tonnes of CO₂e by 10% within one year.

11.03.2013 Welcome to Aroa de Cosa Guerrero

AMA welcome a new member of staff, Aroa de Cosa Guerrero. Aroa has a Degree in Urban Development and Land Surveying and originally trained as a cad technician in Spain, working for a water treatment plant turnkey contractor. She manages our cad department and assists in developing cad standards, including using MEP Revit software.

01.03.2013 Carbon Smart Certification

AMA achieve Carbon Smart Certification, which is an ongoing sustainability programme that recognises and promotes businesses that have taken action to reduce their impact on the environment. Our primary impact on the environment is our transport related emissions and the daily running of our office. AMA are committed to reducing our current calculated carbon footprint of 2.9 tonnes of CO₂e by 10% within one year.

07.12.2012 University of Brighton Refurbishment

The University of Brighton have appointed AMA as building services consulting engineers, to design the mechanical and electrical engineering services for a recent building acquisition in Brighton, namely Cavendish House in Kemp Town. The University are keen to repeat what we have done at their Grand Parade site in the media suite, and have exposed services in workshop and studio areas, which will give a light and airy feel to these contemporary spaces.

16.10.2012 Newhaven Incinerator Tour

AMA visit the Newhaven Energy Recovery Facility. The impressive facility treats 210,000 tonnes of household waste, that is unsuitable for recycling, per year and generates electricity from it. The electricity produced is sold to the National Grid and is enough to supply 25,000 homes. Image by Hochtief UK Construction.



28.09.2012 South Central Ambulance NHS Trust Appointment

South Central Ambulance NHS Trust appoint AMA as building services consulting engineers. This is a new project based in Cosham Hampshire and includes refurbishment of an existing commercial warehouse, to provide a new the new South East Hampshire Resource Centre. Ambulances will be maintained, clinically cleaned and prepared for service.

10.09.2012 Academic Paper Presentation

AMA and University of Brighton complete their first academic paper “<http://envirolblinds.files.wordpress.com/2013/03/eppm2012-paper-thermal-performance-of-external-roller-blinds-retrofit-for-offices-in-the-united-kingdom.pdf>)Thermal performance of external roller blinds retrofit for offices in the United Kingdom (<https://amaconsult.files.wordpress.com/2013/07/eppm-paper-thermal-performance-of-external-roller-blinds-retrofit-for-offices-in-the-united-kingdom.pdf>)”. Paper published and presented by Hanna Ylitalo at the EPPM2012 Conference (<http://www.brighton.ac.uk/eppm2012/>), Brighton 10 – 11 September 2012.

01.08.2012 Knowledge Transfer Partnership with University of Brighton

AMA and the University of Brighton (<http://www.brighton.ac.uk/set/>) are awarded the prestigious Knowledge Transfer Partnership (<http://www.brighton.ac.uk/ccp/ktp/ktp-programmes/>) (KTP), a European Programme encouraging academics to work with businesses. The project focus is on bringing external roller blinds to UK as an energy saving device. Immediate outcome of the collaboration is the formation of our new sister business Envirolblinds.

25.07.2012 Academic Research Project Update

Hanna Ylitalo will be presenting a paper titled “Thermal Performance of External Roller Blinds Retrofit for offices in the United Kingdom” at the EPPM 2012, 3rd International Conference Engineering, Project and Production Management, to be held at the University of Brighton. Hanna has been carrying out research on the thermal performance of external roller blinds as part of her MSc in Sustainability of the Built Environment, in conjunction with the University of Brighton. We would like to thank Mansell for constructing the mock-up test rooms at the University of Brighton last summer, and Aluplex for providing the external blinds.

17.07.2012 CIBSE Chartered Engineer

Congratulations to Graeme! Graeme Badcock, a director of AMA has recently achieved CIBSE membership and Chartered Engineer status. Eventually Graeme did the necessary paperwork, it's good to have another Chartered Engineer in the practice.

13.07.2012 AMA's first BIM Project

AMA are involved in their first BIM (Building Information Modelling) project. Employed by Mansell Construction, AMA are building services engineers for the new Breast Clinic at Worthing Hospital. “This is a great opportunity for us to train and invest in BIM. We are in the process of training to use Autodesk MEP Revit 2013, which we will be using to design the mechanical and electrical engineering services for the new breast clinic.” says David Marshall.

13.07.2012 Regent's College Boiler Plant Replacement

AMA appointed by Argent Mechanical to design the replacement central boiler plant at Regent's College in London. Regents College is a prestigious private university partly located in Regents Park. The design involves, installation 2000kW of gas fired condensing boiler, with facilities for the possible future integration of a gas fired CHP system.



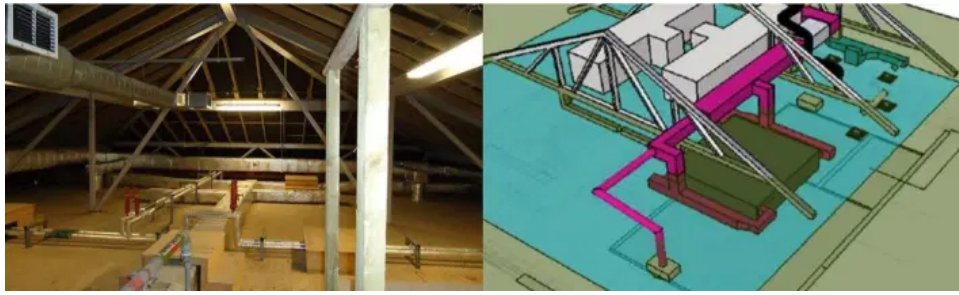
04.05.2012 Sports Building Feasibility Study

AMA appointed by LCE Architects as services engineers, working on the feasibility study of a new sports pavilion for The University of Brighton at Falmer. The client's brief is for a BREEAM excellent building. AMA are currently trialling IES Thermal Dynamic software to assist with feasibility study. Image by LCE Architects.



04.05.2012 Laminar Flow Theatres Hand Over

The new laminar flow theatres were handed over to Western Sussex Hospitals NHS Trust yesterday on time and within budget. AMA were appointed by Kier to carry out detailed design of the mechanical and electrical engineering services, including above ground drainage. The project was particularly challenging in terms of designing the engineering services and plant that would fit into the existing limited roof space. AMA used SketchUp to assist in visualising the plant layout, and to check on installation options. The installation was completed within a 'live environment', adjacent to existing working operating theatres. The project benefited from generous feasibility and design time to look at options and develop the preferred option with detailed coordinated mechanical and electrical services drawings.



12.03.2012 National Grid Substations

AMA have been appointed by Focus Consulting to design the building services for the remodelling of staff work spaces at three National Grid substations. Works at The Isle of Grain, Ninfield and Dungeness include refurbishment, remodelling and extending office accommodation, mess facilities and ablutions at each of the premises. The projects follow on from our previous involvement with the National Grid and Brighton-based Focus Consulting with whom we have completed numerous projects since 2006.



07.03.2012 BREEAM Excellent Outpatients Building Hand Over

The new Worthing Hospital Outpatients building was handed over to Western Sussex Hospitals NHS Trust this month. The BREEAM excellent building has been well received by clinical staff, and they are looking forward to open for patients in the next couple of weeks. This is an energy efficient building with innovative engineering solutions including ventilation heat recovery to improve the efficiency of the central air source heat pump plant during periods of low ambient temperature. David Marshall of AMA says, "We are looking forward to monitor the energy performance of this building over the next year, and to work with Trust on fine tuning the controls during the seasonal commissioning."



19.10.2011 Worthing Hospital Emergency Assessment Area

AMA have begun work as building services engineers for the proposed new emergency assessment area at Worthing Hospital. An improved emergency assessment area will be developed on the ground floor of the East Wing. "Developing a dedicated and highly specialised unit will improve emergency admission care for patients at Worthing. The unit will include a specific ward for all emergency admissions, in which doctors can assess, diagnose and plan treatment for patients without delay."

09.08.2011 AMA Academic Research Experiment Starts

AMA have set up a project with the University of Brighton and Mansell to investigate the environmental benefits of external window blinds. We are currently testing an external blind at the University of Brighton Cockcroft Building during the month of August. We are hoping to publish our report with results by November 2011.

28.06.2011 Operating Theatres Refurbishment

AMA have been appointed by Surrey & Sussex Healthcare NHS Trust as building services engineer at East Surrey Hospital for the refurbishment of the existing operating theatres.

27.06.2011 OPD Update

The weather was on our side as the air source heat pump was finally lifted into position on 27th June. 10 metres long and with an operating weight of 8400kg, the heat pump incorporates an air cooled chiller, primary LTHW and Chilled Water pumps. Heating output is 332 kW at an ambient of -4degC.



23.03.2011 Toy & Model Museum Reception

AMA holds a drinks reception at the Brighton Toy & Model Museum. The highlight of the evening was the demonstration of the 1930's three-rail '0' gauge working model railway, featuring authentic period track side accessories. Image by Brighton Toy & Model Museum.



10.10.2010 Western Sussex Hospitals NHS Trust

AMA are currently working for Western Sussex Hospitals NHS Trust, providing engineering design for new laminar flow theatres.

01.10.2010 BREEAM Excellent Outpatient Department Building

Appointed by Mansell as Building Services Consulting Engineers on new £5.5m OPD building at Worthing Hospital. We are aiming for BREEAM Excellent rating. AMA are working on the new Outpatient Department building with HLM architects and CSC Engineers. This innovative design raises the refrigerant evaporation temperature during low temperature conditions by directing ventilation exhaust air at the air source heat pump.

Image by HLM Architects.



01.06.2010 Alonso Marshall Associates Ltd

David Marshall Jnr, Graeme Badcock, Hanna Ylitalo and Jesus Vizcaya join AMA. AMA (Alonso Marshall Associates) Ltd is a Brighton-based building services consulting engineers, launched by David Marshall Snr in 2007. The close team of highly experienced engineers and technologists, who have previously worked together at DMA are now reunited at AMA, focus on creating sustainable, efficient and culturally-appropriate businesses and places.

